

注：由于拍摄、制作原因，本图册颜色仅供参考。在实际的批量生产和喷涂加工中有可能出现色差，请以实物为准。
Note: the color card is made by the laboratory, it's for reference only. The slight color difference may occur in the actual mass production and the spraying process, which is a normal phenomenon.



品鉴昕泰：www.fsxintai.com



微信公众号

广东生产基地 Guangdong Manufactural Base:

佛山市昕泰装饰材料有限公司

地址：广东省佛山市南海区里水镇和顺共同工业区
电话：0757-8565 2680
传真：0757-8562 0822 邮编：528231
邮箱：xintai588@126.com

Foshan Xin Tai Decoration Material Co., Ltd.

Add：GongTong Industrial Zone,Heshun Lishui Town,
Nanhai District, Foshan City, Guangdong Province.
Tel：0757-8565 2680
Fax：0757-8562 0822 P.C.：528231

湖南生产基地 Hunan Manufactural Base:

湖南昕泰装饰材料有限公司

地址：湖南省桃源县漳江工业园
电话：0736-660 2091
传真：0736-660 2091 邮编：415799
邮箱：m18925975679@126.com

Hunan Xin Tai Decoration Material Co., Ltd.

Add: Haojiang Industrial Park, Taoyuan County,
Hunan Province.
Tel：0736-660 2091
Fax：0736-660 2091 P.C.：415799

瑞德元邦
192212829 / 8622677
www.brand757.com

时尚建材 · 品质昕泰
Fashion Building Material Best Quality Xintai



- 创新 INNOVATION
- 研发 R&D
- 服务 SERVICE

佛山 · 湖南

昕泰装饰材料有限公司
Xin Tai Decoration Material Co., Ltd.



时尚建材 · 品质昕泰

Fashion Building Material Best Quality Xintai

Fashion Building Material Best Quality Xintai

卷首语 FOREWORD

■ 展翅飞翔 梦想与希望

■ “以实力，让生活变得舒适；凭精品，让人居达致完美”是昕泰人心中的梦想。一腔的热情，一心的执着，连飘动的白云也给感染，幻化成有力羽翼，携带这一份真挚的希冀，向着湛蓝晴空，展翅飞翔，奔往梦想实现的地方。

■ 我们一直致力于行业领航，总是在寻找行业新的方向！我们有责任区创新这个行业、开拓这个行业。我们深信，坚持就是胜利！争创行业第一品牌，缔造昕泰辉煌！

■ Go For The Dreams And Spread

■ With the strength, let the life become comfortable with people; fine, juda to perfection "is the dream Xin tai. The enthusiasm of a cavity, the persistence of one mind, even the flutter of white clouds also turn infection into strong wings, carrying this sincere desire to fly to the clear blue sky and fly to the place where dreams come true.

■ We have been committed to the industry, always looking for a new direction in the industry! We have a responsible area to innovate this industry and develop this industry. We are convinced that perseverance is victory! Strive to create the first brand of the industry, create Xintai brilliance!





INNOVATION · R&D · SERVICE
创新 · 研发 · 服务



企业致辞

Fashion building material best quality xintai

COMPANY ADDRESS

■ 一直以来，昕泰给自己的定位是“领跑者”，我们必须不断创新，走在前面。

■ 创新精神就像一台强劲的发动机，引领着昕泰稳健前进。正是凭借着这股不断创新的精神力量，昕泰才得以积极地拓展、延伸，昕泰品牌才能够得到越来越多的认同。

■ 创新就是要打破惯性，就是要挑战自己，就是要摆脱成功带来的条条框框。而创新，需要一个项目一个项目地去积累，需要一点一滴地去突破。

■ 未来，昕泰将致力于逐步扩大领先优势，昕泰既要面对来自优秀同行的竞争挑战，也要面对扩大经营的自我突破。这一目标的实现，正有赖于充满激情的创新精神。



董事长常元贵先生在新厂落成庆典致辞
Hunan Production Base



■ XinTai sets its position as a "leader", non-stop to innovate, to go ahead.

■ Innovative spirit likes a powerful engine, leading Xin Tai to get steady progress. By the power of shares and innovative spirit, Xin Tai is enabling to aggressively expanding and extending, and its brand gets more and more recognition.

■ Innovation, to break the inertia and challenge you, is to get rid of the traditional rules to success; but a way to accumulate a project to project, to break through bit by bit.

■ In the Future, Xin Tai is committed to gradually expand the advantages. While facing challenges from excellent competitive peers, Xintai will try to expand its operations in the face of self-breakthrough. To achieve this goal, innovation spirit passion is a must.

Fashion building material best quality xintai

目录 CONTENTS

- 公司简介 Company Profile | 01
- 公司文化 Corporate Culture | 10
- 资质荣誉 Aptitude Honor | 15
- 公司架构 Corporate Architecture | 20
- 销售网络 Sales Network | 26
- 行业标准 Industry Standard | 32
- 钣金生产 Sheet Metal Production | 40
- 喷涂生产 Spraying Production | 45
- 铝单板 Aluminum Sheet | 52
- 铝蜂窝板 Aluminum Honeycomb Plate | 60
- 铝天花板 Aluminum Ceiling | 65
- 工程实例 Engineering Example | 70
- 工程目录 Engineering Catalogue | 78



佛山生产基地 Foshan Production Base

走进昕泰

Fashion building material best quality xintai

ABOUT XINTAI

昕泰装饰材料有限公司创立于2003年，总部—佛山市昕泰装饰材料有限公司座落于珠江三角洲的腹地——南海里水镇。2016年创立全资子公司：湖南昕泰装饰材料有限公司，子公司总占地面积70多亩，总投资1.5亿元人民币，公司专业生产幕墙铝单板、异型天花板、造型装饰材料及金属喷涂等。是一家集生产、设计、安装一条龙服务的跨地域、综合性的现代化产业集群公司。

公司成立之初即本着“想客户之所想”，“急客户之所急”，“忧客户之所忧”的经营理念，10多年来，公司得到迅速的发展壮大。先后从世界各地引进的电脑数控钣金加工设备，全自动喷涂生产线，日本兰氏、瑞士金马喷枪，专业生产、设计各种室内外金属单层铝幕墙板、金属铝合金天花板、金属铝蜂窝板，产品多样化，表面色泽均匀细腻、具有耐腐蚀、耐磨、抗折等特点。



为适应公司全方位发展战略方针，公司除了布局两省两大生产基地之外，在全国各大中城市还设有办事处或代理商，采取区域优势生产加工，大大的节约了沟通、运输、施工和售后成本，得到广大客户的一致好评，产品销售遍及世界各地。并成功设计和承造各种机场、高铁、地铁、广场、综合体等数百项重大工程项目。

在成绩面前，昕泰公司不骄不燥、务实、开拓、进取。以建设世纪品牌为己任，以建立行业典范为目标，展望未来，在发展壮大的道路上，我们也一定会继续努力，不忘初心、开拓进取、稳步前进。并衷心希望广大新老客户和产业同行光临指导，共同创造装饰行业的又一辉煌。

Xintai Decorative materials Co.LTD, founded in 2007, is a comprehensive enterprise integrating solution design, production design, production manufacturing, installation; and specialized in metal wall panel, Metal Honeycomb panel, metal pendent board, enamelled steel, Self-cleaning aluminum, energy-saving aluminum series.

Xintai has two production bases in t has two production bases in Foshan, Guangdong and Chengdu, Sichuan. Its total area is over 50,000 square meters, and introduced advanced metal sheet processing equipments, fully automatic spray-coating line from Japan and Swiss GEMA spraying gun for specialized production line. Xintai gets good reputation from customers with perfect technical, quality and service; and its production sales national-wide and developed countries and areas, such as Japan, north-west and European,

Recent years, Xintai with the guidance of market, is to strength technology innovation, upgrade internal management, develop new modern product, increase technology skills and customer service to provide good platform to achieve intelligent strategy, adjustment of industrial structure to upgrade the enterprise comprehensive competitive ability.

At present, Xintai consist on the core value philosophy of “ Staff satisfaction、Enterprise satisfaction、Customer satisfaction” , and insist on the enterprise spirit of ‘obligation, tough, innovation’ . With the strong power of brand, technology, industry, talent, market, service, Xintai upgrades manufacturing, service, quality and development of economic globalization in order to build itself as a respective enterprise worldwide.



湖南生产基地 Hunan Production Base

总占地面积：71亩
总投资：1.5亿元

我们有着追求和谐的思想，有着崇尚创新，有着研发的视觉，有着服务的思维。

We have the idea of pursuing harmony, advocating innovation, the vision of R & D, and the thinking of service.

资质荣誉

Fashion building material best quality xintai

QUALIFICATION HONOR

- 社会各界和广大消费者的广泛认可与赞誉，坚定着我们的执着追求，昕泰以盛誉为动力，一如既往的专注卓越品质、技术、优质服务和科学管理，不断谋求更高层次的超越发展。
- 荣誉是努力的结果，是能力的象征，更是超越的动力。在强大的技术能力与过硬的产品综合品质的支撑下，昕泰不断获得社会权威机构以及广大消费者的一致认可，声名卓著、享誉业界。
- The extensive approval and praise from various circles of the society and numerous consumers strengthen our persistent pursuit. Xintai regards great fame as its motive force, and as before, is absorbed in remarkable quality, innovative technology, high-quality service and scientific management, and seeks higher-level surmounting development constantly.
- Honor is the result of effort, the symbol of ability and even a surmounting motive force. With the support of its strong technological ability and the comprehensive quality of its products really up to the mark, Xintai has won the unanimous approval from social authoritative organizations and numerous consumers, its reputation is distinguished, and it enjoys great prestige in the industry.



我们有着追求和谐的思想，有着崇尚创新，有着研发的视觉，有着服务的思维。
We have the idea of pursuing harmony, advocating innovation, the vision of R & D, and the thinking of service.

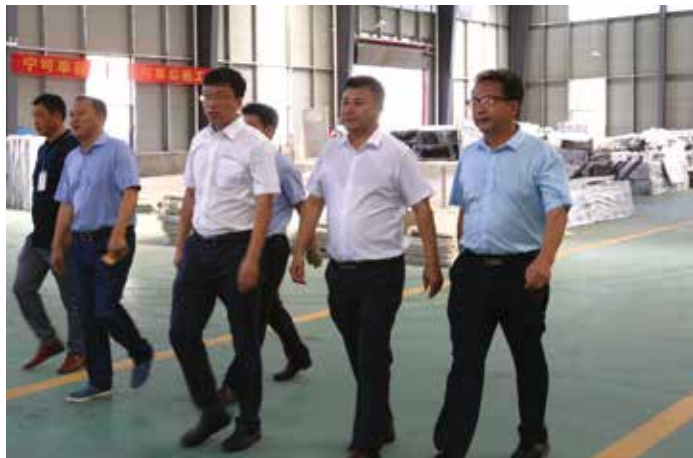
企业文化

Fashion building material best quality xintai

COMPANY

企业的人力资源整合是充分利用人的主观能动性的因素。昕泰公司在注重人才培养和开发的同时更注重优秀团队精神的支柱作用，无论是研发、生产还是管理、服务，都时刻以“精诚合作，团队致胜”的理念作为动力的源泉。

The integration of human resources in enterprises is a factor that makes full use of the subjective initiative of people. Xintai company pays more attention to the backbone role of outstanding team spirit while focusing on talent training and development. No matter it is R & D, production, management or service, it always takes the concept of "sincere cooperation and team winning" as the driving force.



公司董事长常元贵先生向相关考察领导介绍公司情况
Xintai Elite Staff

CULTURE

■ 经营理念 Operation Philosophy

诚信、高效、创新、超越
Sincerity, high efficiency, innovation and surmounting

■ 企业战略 Business Strategy

创新求进、服务社会
Innovate, seek progress and serve the society

■ 企业精神 Enterprising Spirit

优质服务、务实发展
Provide first-class service and develop practically

■ 经营方针 Operation Policy

传承一流品质、打造一流品牌
Pass first-class quality on and make first-class brands

■ 合作思想 Cooperative Thought

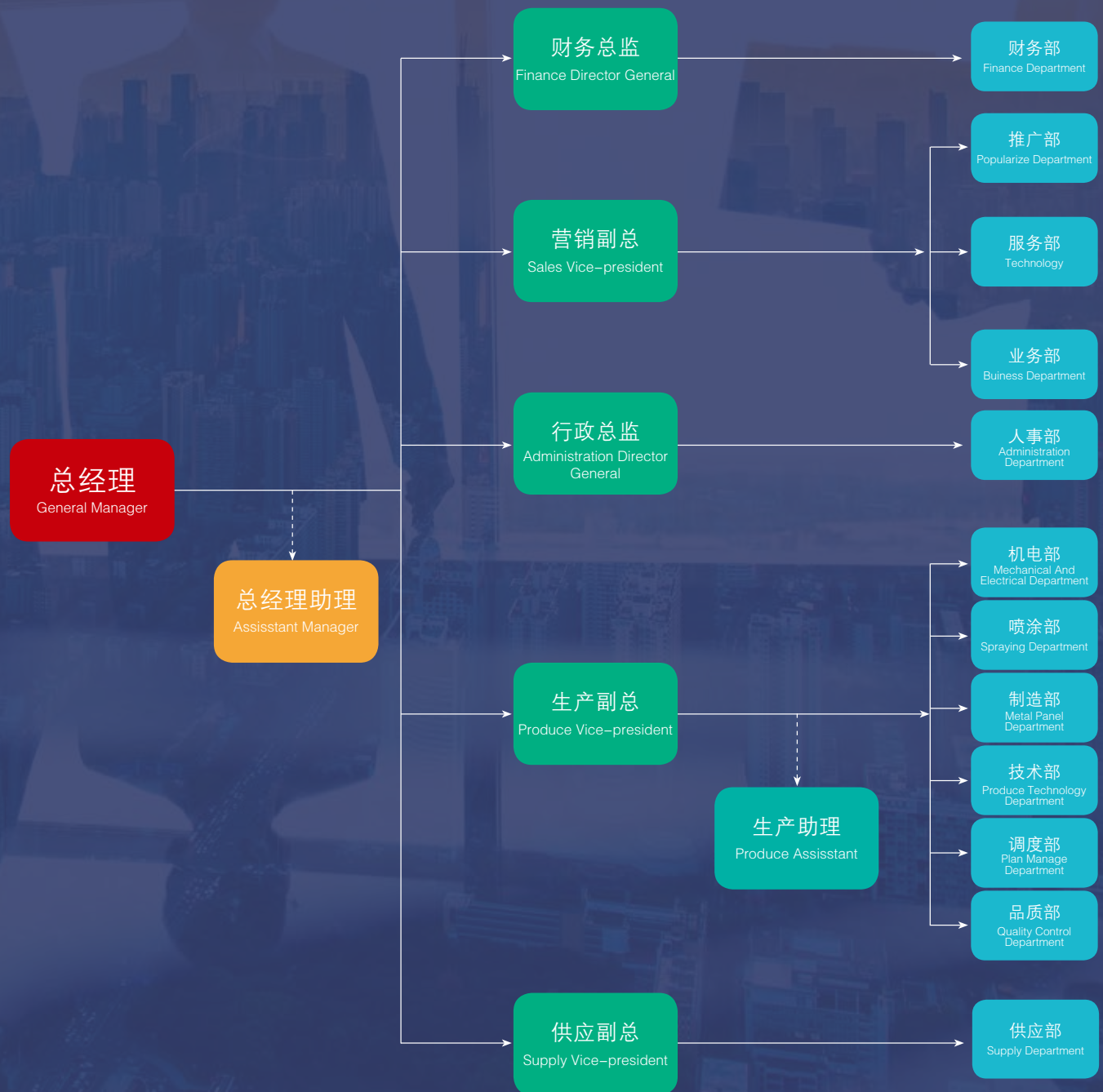
互惠共赢、共同发展
Mutual benefit, win-win and common development



企业架构

Fashion building material best quality xintai

ORGANIZATIONAL CHART



销售网络

Fashion building material best quality xintai

SALES NETWORK

在积累人才、技术、品牌和规模优势的基础上，昕泰又重点加强了市场网络建设，同步发展海外市场。目前，昕泰已在全国二十多个省、市建立了完善的销售及专卖网络，并远销中东、东南亚、欧美等国家和地区。

In the accumulation of human resources, technology, brand and size advantage on the basis of the Xintai also focus on strengthening market networks, and further development of overseas markets. At present, Xintai has establish a comprehensive sales network, in the country more than 20 provinces and municipalities and are exported to the Middle East, Southeast Asia, Europe and the United States and other countries and regions.



- 售前服务 Pre-sales Service
- 提供方案设计 Offering solution to design
- 提供优化设计 Offering optimization plan



- 售中服务 In-sale Service
- 送货服务 Delivery service
- 指导安装服务 Installation service



- 售后服务 After-sale Service
- 售后跟踪服务 After-sales follow-up service
- 投诉处理 Complaint handling service

“诚招天下客，誉从质中来”

"Welcome worldwid customes, reputation from the quality"

昕泰 - 与世界如此接近！

XINTAI DECORATION MATERIAL

Fashion building material best quality xintai





钣金生产线

Fashion building material best quality xintai

■ 佛山基地钣金生产线
Foshan base metal-sheet production line

METAL-SHEET PRODUCTION LINE

- 生产自动化能最大程度提高工作效率，减少手工带来的误差，从而提升产品质量及降低生产成本。因此我们不断引进国内外先进的生产技术和生产设备，同时不断借鉴国内外完善的生产管理体系，使我们的生产力得到大力的发展与不断的提高，同时保证产品质量的长期稳定与不断的提升。

- Auto production is highest efficiency, reduces manual mistakes, enhance quality and increase cost. We introduce advanced production technology and equipment, and adopt modern production management system to enhance our capacity and upgrade quality steadily.

■ 钣金流程示意图

Sheet metal process sketch map



■ 湖南基地钣金生产线
Hunan base metal-sheet production line



大型冲孔、镂空机群 Large punching and hollowing machine group



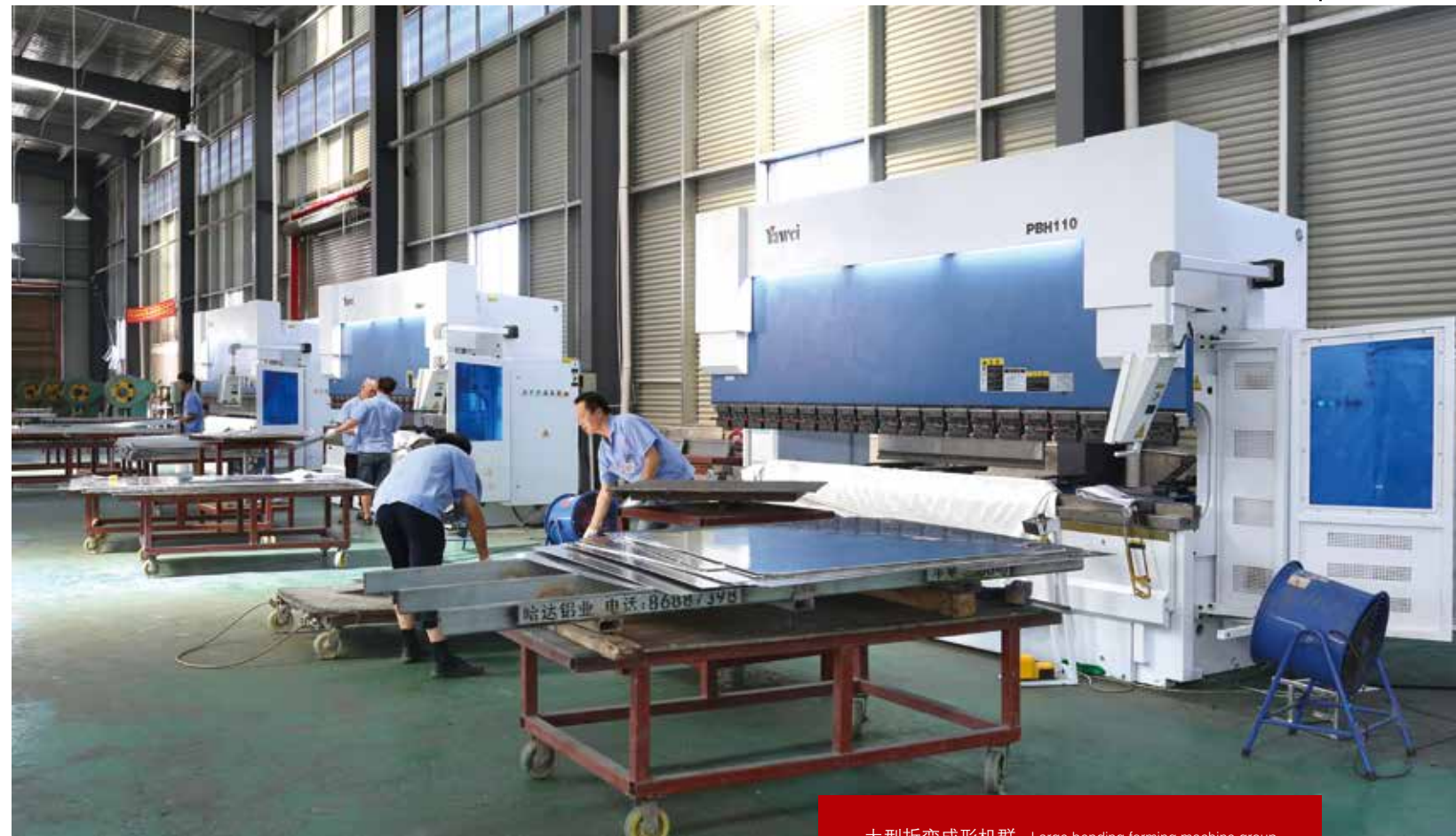
大型自动平板系统
Large automatic tablet system

昕泰 - 钣金生产车间

SHEET METAL PRODUCTION WORKSHOP



智能操作系统 Intelligent operating system



大型折弯成形机群 Large bending forming machine group



数控冲床
Numerical Control Punching Machine



焊接
Welding



自动下料 Numerical Control Blanking



数控雕刻机 Numerical Control Carving Machine



数控开槽 Numerical Control Grooving



打磨 Grinding



抛光 Polishing



钣金成品 Polishing



喷涂生产线

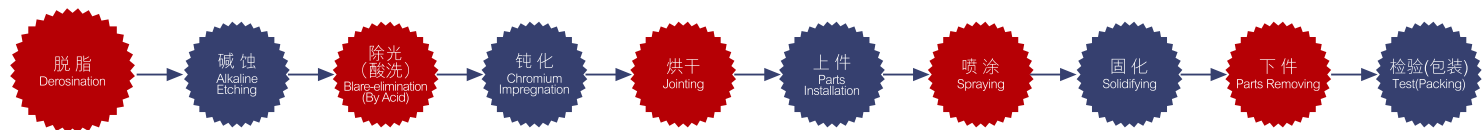
Fashion building material best quality xintai

BASE SPRAY LINE

■ 喷涂是产品生命力的表现，全自动化的表面处理设备，避免了人工操作的不稳定性，同时为了产品更具生命力，佛山、四川两大基地先后从国内外引进全自动喷涂生产条，并且为了保证喷涂产品的品质，昕泰多年来只选用最上乘的喷涂原料供应商，并承诺昕泰所有喷涂产品的使用寿命均超过国家标准。

■ 喷涂流程示意图

Spraying process of aluminum veneer sketch map



喷涂 - 佛山基地

BASE SPRAY LINE

Spray is the vitality of the product, full automatic surface treatment equipment, without manual mistakes, increases the vitality of product. Full automatic spray line introduced for two bases of Foshan and Sichuan makes sure good spray quality. At the same time, Xintai only apply the best quality painting as raw materials and make sure all spray quality life time longer than national standard.



全自动喷漆挂件系统 Automatic spourting System

■ 佛山基地喷涂生产线
Foshan base sply line



喷面、底漆 Spourting surface paint



脱脂酸洗 Foshan base sply line



全自动喷漆挂件 Automatic spourting



产品下线检验 Linear product testing



贴膜 Welding



全自动喷漆挂件系统 Automatic spourting System

■ 湖南基地喷涂生产线
Hunan base sply line

喷涂 - 湖南基地 BASE SPRAY LINE

- 全流程 自动化
Spraying process of aluminum veneer sketch map



烘干 Foshan base sply line



底漆 Foshan base sply line



脱脂酸洗 Foshan base sply line

喷涂生产线 BASE SPRAY LINE

Fashion building material best quality xintai

- 喷涂是产品生命力的表现，全自动化的表面处理设备，避免了人工操作的不稳定性，同时为了使产品更具生命力，佛山、四川两大基地先后从国内外引进全自动喷涂生产条，并且为了保证喷涂产品的品质，昕泰多年来只选用最上乘的喷涂原料供应商，并承诺昕泰所有喷涂产品的使用寿命均超过国家标准。

Spray is the vitality of the product, full automatic surface treatment equipment, without manual mistakes, increases the vitality of product. Full automatic spray line introduced for two bases of Foshan and Sichuan makes sure good spray quality. At the same time, Xintai only apply the best quality painting as raw materials and make sure all spray quality life time longer than national standard.



面漆 Foshan base sply line



固化 Foshan base sply line

行业标准

Fashion building material best quality xintai

STANDARDS OF INDUSTRY

昕泰以先进的生产技术和工艺，先进的检测设备和方法，以及科学的运营管理模式，来保证产品优质、服务一流。以用户满意为目标，加强质量监控，提高检测手段。以国际检测标准为依据，严格按照 ISO9001:2000 质量管理体系。今日的辉煌来自于昨天的努力；展望未来，挑战与希望并存。我们相信：昕泰优质的产品和服务，始终与广大客户同行。

With advanced production technology and technology, advanced testing equipment and methods, and scientific operation and management mode, XINTAI guarantees the product quality and the first-class service.Takes customer satisfaction as the goal, to strengthen quality control, improve detection methods. To international testing standards as the basis, in strict accordance with the ISO9001: 2000 quality management system. Today's glory comes from yesterday's efforts; looking forward to the future, challenges and hopes co-exist. We believe:XINTAI is always popular by customers with high quality products.



色差 Chromatism



膜厚 Thickness of film



光泽 Blare



务实进取，高效发展
Pragmatic and enterprising, efficient development

行业标准 STANDARDS OF INDUSTRY

中华人民共和国有色金属行业标准 YS/429.1-2000 YS/T429.2-2000
Chinese industrial standards for nonferrous metals YS/T429.1-2000 YS/T429.2-2000

美国建筑业制造协会标准《建筑铝材高性能有机涂层》(AAMA2605-98)
American buliding industry manufacturer standards for "high performance organic coating of Aluminum meterals" (AAMA2605-98)

中华人民共和国建筑工业行业标准 JG/T133-2000
Chinese industrial standards for architecture JG/T133-2000

中国行业标准《建筑幕墙》(GB/T21086-2007)
Chinese industrial standards for architectural curtain wall(GB/T21086-2007)

企业产品标准 Q/JLI-Q/ZK002-2009
Products standards of enterprise Province Q/JLI-Q/ZK002-2009

氟碳喷涂铝单板技术标准 (JG/T 133-2000)

Technical Specification Of PVDF Aluminum Panel(JG/T 133-2000)

序号 NO.	项目 Test Item.		技术要求 Specification
01	平均涂层厚度 Average coating thickness		二涂≥ 30 μ m, 三涂≥ 40 μ m 2 coats ≥ 30 μ m,3 coats ≥ 40 μ m
02	色差 Average coating thickness		目视检查无明显色差或单色涂料用电脑色差计测 ΔE ≤ 2NBS Average coating thickness
03	光泽 60° Gloss 60°		≤规定值 ±5 ≤ specified value±5
04	铅笔硬度 Pencil hardness		≥ HB
05	附着力, 级 Adhesion,grade		划格法 0 级 Grade 0 by cross hatch method
06	耐冲击 Impact resistance		50kg.cm, 无脱漆 50kg.cm,no peel off
07	耐磨性 Abrasion resistance		≥ 5L/ μ m
08	耐盐酸 HCl resistance		15min 点滴, 无气泡, 外观无变化 Spot drop and set 15min,no blister,no appearance change
09	耐硝酸 HNO3 resistance		颜色变化不超过 ΔE ≤ 6NBS The color change within ΔE ≤ 6NBS
10	耐砂浆 Mastic resistance		无任何变化 No any change
11	耐洗涤剂 Detergent resistance		无气泡, 漆膜无脱落 No blister,no peel off
12	耐湿 Damp resistance		4000h, 二级以上 4000h,above grade 2
13	耐盐雾 Salt spray resistance		4000h, 二级以上 4000h,above grade 2
14	耐候性 Weather resistance	褪色 Discoloration	10 年后 ΔE ≤ 5NBS ΔE ≤ 5NBS after 10 years
		粉化 Chalking	10 年后 GB/T 1766, 1 级 GB/T 1766 grade 1 after 10 years
		光泽保持率 Gloss retention	10 年后 保持率≥ 50% ≥ 50% after 10 years
		膜厚损失 Loss of coating thickness	10 年后 ≤ 10% ≤ 10% after 10 years
15	耐人工老化 Accelerated aging resistance	褪色 Discoloration	2000h 后 ΔE ≤ 5NBS ΔE ≤ 5NBS after 2000h
		粉化等级, 级 Chalking grade	2000h 后, 0 级 Grade 0 after 2000h
		失光等级, 级 Gloss grade	2000h 后 不次于 2 级 Over grade 2 after 2000h



铝单板

Fashion building material best quality xintai

ALUMINUM VENEER

采用氟碳烤漆生产的铝单板是当今耐酸碱、耐腐蚀性、耐黄变、抗紫外线、耐候性最好的高档环保装饰材料，漆面质感细腻，色泽均匀，历久常新，质量达到国际同类产品的先进水平。特别适用于大型高层建筑、屋面、幕墙、太阳能设备等高档装饰工程。

The PVDF coated aluminum sheet is now the most acid resistance,corrosion resistance,anti-yellowing resistance,UV resistance and weather resistance of the best high-grade green decoration materials.The coating is good texture,uniformed color,lastng for years and its quality has reached the international advanced level of similar products.This product is especially suitable for large-scale high building,roof,curtain wall,solar equipment and other high-end decoration projects.

The Characteristics Of Aluminum Veneer

铝单板的特点

- 重量轻，刚性好，强度高；
 - 耐候性和耐腐蚀性强；
 - 加工性好，可加工成平板、弧形板和双曲面板等复杂造型；
 - 色彩选择广泛，利于搭配；
 - 自洁能力强，维护费用低；
 - 使用寿命长，涂层保质期十五年以上；
 - 施工安装方便、快捷；
 - 安全性高，不脱落、不剥离；
 - 可回收再利用，回收价值极高，有利环保。
- Light weight, good rigidity, high strength;
 - Strong weather resistance and corrosionresistance;
 - Good workability, can be processed into a flat plate, curved plate and double panels and other complex shape;
 - Widely colors selection is better for collocation;
 - Self cleaning ability, low maintenance cost;
 - Long service life, coating and shelf-life of fifteen years;
 - Convenient, fast construction and installation;
 - High safety, do not fall off, do not peel;
 - Recyclable use, high residual value, environmentally friendly.

Aluminum Veneer Product Selection

铝单板选材

我司选用进口和国产优质铝板为基料；

- 板材厚度系列有 1.0mm，1.5mm，2.0mm，2.5mm，3.0mm，4.0mm，5.0mm 等；
- 氟碳涂料（KYNAR500）：采用经国际著名涂料公司授权的氟碳涂料。

We use high-quality Aluminum panel manufactured by domestic and foreign companies as raw materials.

- The thickness of Aluminum panel varies from 1.0mm, 2.0mm, 2.5mm, 3.0mm,4.0mm,5.0mm.
- We own PVDF(KYNAR500)coating licenses by international famous paints companies.



Aluminum Veneer Material And Structure

铝单板材质及构造

铝单板采用优质铝合金板材加工成形。基材型号通常为3003，状态为 H24，其常规厚度为 2mm,2.5mm 和 3mm 三种。其构造主要由面板、加强筋和角码组成。面板和加强筋通过电焊螺钉连接，使之成为一个牢固的整体，极大地增强了铝单板的强度与刚性，确保了长期使用过程中的抗风压能力和铝板表面的平整度。

Aluminum veneer is made up of high quality aluminum plate which model is usually 3003H24. Its thickness normally is 2mm, 2.5mm and 3mm .And its structure is mainly consist of panels, reinforce ribs and angle connectors. Panels and reinforce ribs are connected by welding and screws to make them as a solid section. Which greatly enhanced the strength and rigidity of aluminum veneer,and ensure the surface flatness and anti-wind press ability during the long-term using.

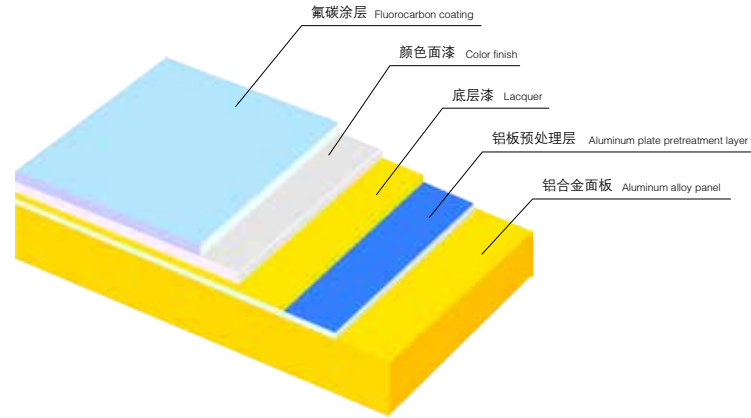


Surface Coating Of Aluminum Veneer

铝单板的表面涂层

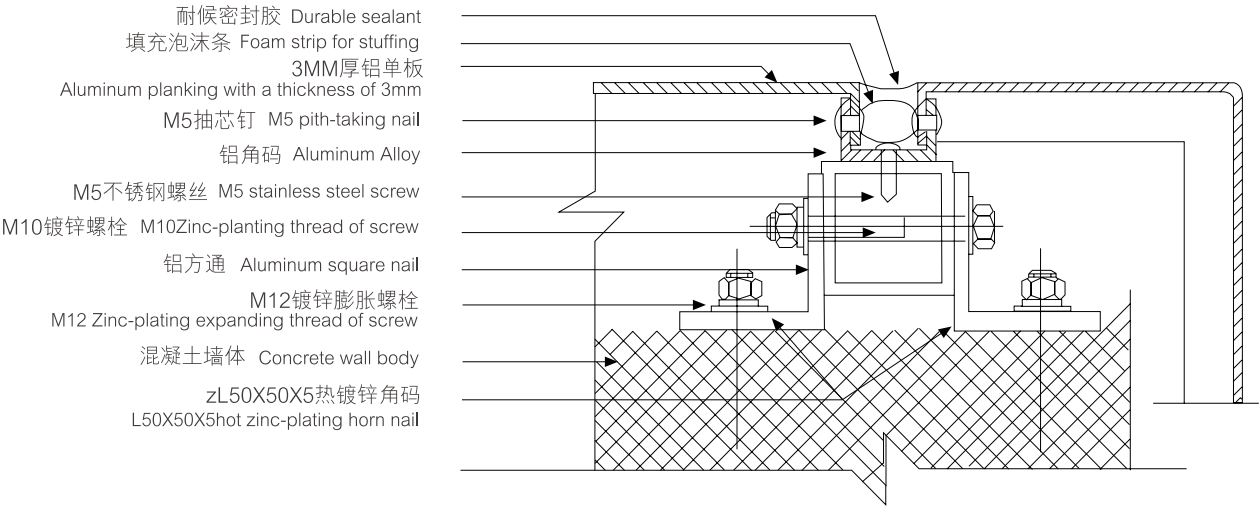
铝单板表面采用氟碳涂料喷涂而成，其核心成分是 KYNAR-500 氟碳树脂，具有卓越的耐候性和耐腐蚀性，能经受恶劣环境的考验，使用寿命长达十五年以上。

Aluminum veneer surface use fluorocarbon coating, and its main component is KYNAR-500 fluorocarbon resin.With excellent weather resistance and corrosion resistance ability, it can withstand the harsh environment and its service life can be up to fifteen years or more.



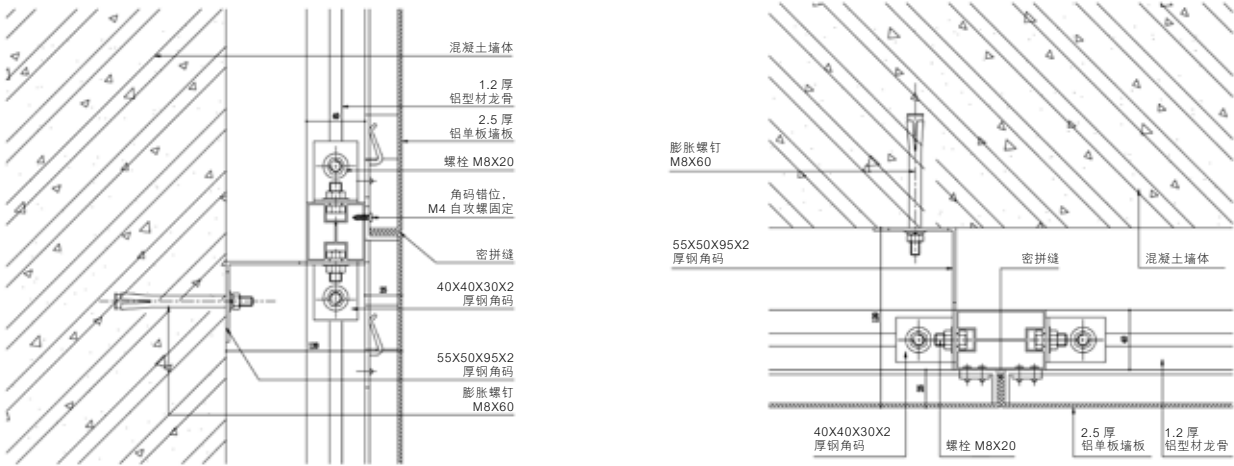
Structural Diagram Of Single-Layer Aluminum Plate

单层铝板结构图



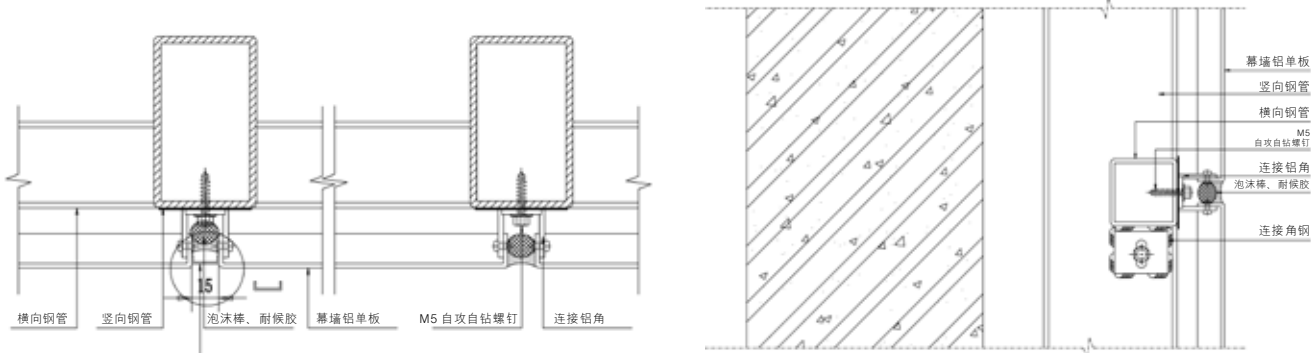
Installation Structure Drawing Of Aluminium Plate

铝板安装结构图



铝单板墙板 - 横向拼缝大样图

铝单板墙板 - 纵向拼缝大样图



幕墙铝单板 - 横向节点

幕墙铝单板 - 纵向节点

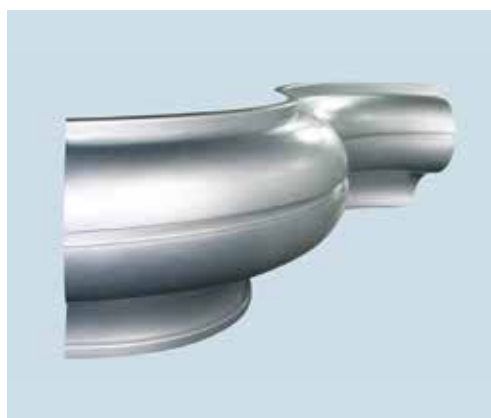
双曲铝单板

Fashion building material best quality xintai

DOUBLE-CURVED ALUINUM VENEER

- 随着建筑物外形风格的多样化，双曲面铝单板已越来越受到业主和幕墙设计师的青睐。由于其加工难度大，能生产双曲面板的厂家又很少，很多工程只能放弃原有设计方案，导致幕墙的整体效果难以准确表达出设计师的设计理念。
- 昕泰人大胆探索，自主创新，利用蒙皮拉伸技术和三维建模原理，解决了铝单板行业的难点技术——双曲面铝单板的生产、设计工艺，成为国内为数不多的真正能批量生产双曲面铝单板和复杂异形板的企业之一，为设计师提供了更为广阔的想象和设计空间。
- 昕泰双曲铝单板的设备先进，工艺精湛，品质优良，交货期短。板面效果比常见的通过分割焊接生产的双曲板平整度好，安装效果比所谓的“以直带曲”等假双曲的弧线圆滑，充分展示了双曲面铝单板在金属幕墙上无可替代的独特魅力。

- With the diversity of external styles of building, double-curved aluminum veneer has become increasingly popular to the house owners and curtain-wall designers. Because of its great processing difficulty, and few factories producing double-curved veneer, many projects have to give up the original design schemes, resulting in that the overall effect of curtain walls can not accurately express the design concept of the designers.
- Xintai people make bold explorations, innovate independently, resolve the difficult technology of production and design techniques of aluminum veneer in the aluminum veneer industry via skin stretch technology and the principle of three-dimensional modeling, become one of the few enterprises which can batch produce double-curved aluminum veneer and complex shaped veneer, as well as provide a wider imagination and design space for designers.
- Xintai double-curved aluminum veneer has its advanced equipment, exquisite workmanship, high quality and short delivery time. The flatness of veneer effect is better than that of the common double-curved veneer produced by cutting and welding; the arc of installation effect is sleeker than that of artificial double-curved one of “curve from straight” . It fully displays the irreplaceable and unique charm of double-curved aluminum veneer on metal curtain wall.



艺术镂空板

Fashion building material best quality xintai

ARTISTIC HOLLOW BOARD

采用先进的电脑数控冲床、激光雕刻设备。选用优质铝合金板材为基材，再经过数控折弯等技术成型，表面喷涂装饰性涂料的一种新型天花吊顶、内墙、外墙装饰材料。

Adopted advanced computer numerical control punching machine, laser equipment. Introduce high quality aluminum material as base board, use CNC bending processing to product. Decorative surface spray treatment is a new ceiling pendent, interior wall, exterior wall decorative material.



The Advantages Of Artistic Hollow Board

艺术镂空板的优点

- 按客户要求定制任意难度花纹；

■ 图案独特美观，体现个性；

■ 色泽均匀一致，户内使用，质保 12 年不变颜色；

■ 外观精细、平滑、洁净；

■ 优质热镀锌铁板或铝合金板确保面板刚度和平整度；

■ 建议应用场合：楼宇大堂、候机 / 车楼、公共场所、体育场馆、高档办公室、购物广场等。
- Customized difficulty pattern

■ Unique and beautiful pattern, reflect the personality

■ Uniform color, indoor use, and the warranty for 12 years the same color.

■ The appearance is fine, smooth and clean.

■ Quality galvanized iron or aluminum plate panels ensure rigidity and flatness

■ Recommended applications: building lobbies, lounges / car floor, public places, Sports venues, upscale offices, shopping plaza.





3D/4D 木纹铝单板

Fashion building material best quality xintai

IMITATION WOOD ALUMINUM VENEER

氟碳预辊涂仿木纹铝单板利用先进的预辊涂技术仿制出木纹，富有质感，巧夺天工，色彩绚烂，美不胜收。氟碳预辊涂木纹系采用数码彩印和预辊涂技术，在铝板表面直接辊涂出各种花纹后，经高温烘烤定型，色彩鲜艳清晰，纹理逼真。

Fluorocarbon pre-roller-coated wood-grain imitating aluminum panel adopts advanced pre-roller-coating technology, with rich textures excelling nature, with brilliant colors amazingly beautiful. Fluorocarbon pre-roller-coated wood-grain series adopts digital color printing and pre-roller-coating technology to directly roller coat various patterns on aluminum panel surface. Through high temperature setting, the colors are brilliant and clear, and the grains are vivid.



Imitation Wood Aluminum Veneer Characteristic

仿木纹铝单板的特点

- 防水防潮，转印木纹铝单板是经抽真空处理，将木纹膜移印到铝单板上的一种高档金属装饰材料，不但能抵御一般的水泼溅，而且在潮湿的环境中它也能够保持内部干燥，更不会影响到材料引起发霉或腐蚀。
- Waterproof moisture, transfer wood wood veneer is vacuum treatment, the wood grain film printed on the aluminum veneer on a high-grade metal decorative materials, not only to resist the general water splash, but also in the wet in the environment it can also keep the inside dry, and will not affect the internal material caused by mold or corrosion.
- 加工工艺性能好、可加工成平面板、弧形板面和球形面板等复杂的各种几何图形。
- The processing technology performance, and can be processed into a flat panel, curved plate and spherical panels and other complex geometric graphics.
- 色彩可选性广、丰富、视觉效果好、装饰效果极佳。
- Color optional wide, rich, good visual effects, decorative effect is excellent.
- 循环再生、绿色环保：转印木纹铝单板的饰面涂层，既保持了国际流行的明亮派风格，又解决了玻璃幕墙所产生的光污染问题。
- Recycling, green: transfer wood veneer veneer finish, both to maintain the international popular bright style, but also to solve the glass curtain wall generated by light pollution problems.
- 施工快捷、更省成本：转印木纹铝单板出厂时已成形，无须后期加工，所以施工时只须直接安装，成本低，更换快捷。
- The construction of fast, more cost: transfer wood grain aluminum veneer factory has been formed, no post-processing, so the construction only need to install directly, low cost, quick replacement.

仿石纹铝单板

Fashion building material best quality xintai

IMITATION STONE
ALUMINUM SINGLE PLATE

轻量化、刚性好、强度高阻燃性好、符合消防要求：铝板饰件采用高强度铝合金及氟碳（PVDF）油漆或面板，具有良好的阻燃性，完全可以通过消防验收。最佳的耐候性、自洁性和抗紫外线、耐酸、耐碱性能，在室外正常条件下，能够保证最佳的色彩，氟碳基料 KYNAR500、HYLAR5000，含量为 70%，能有效抵抗酸雨，空气污染及紫外线的侵袭。特殊分子结构使灰尘不能依附在表面，具有良好的自洁性。

Lightweight, rigid, high strength flame retardant, meet fire safety requirements: high-strength aluminum trim and aluminum fluorocarbon (PVDF) paint or panel with good flame resistance, can be passed fire inspection. Best weather resistance, self-cleaning and anti-UV, acid, alkali resistance, under normal outdoor conditions, to ensure the best color, fluorocarbon base KYNAR500, HYLAR5000, content of 70%, can effectively resist acid rain, air pollution and ultraviolet light. Special molecular structure so that dust cannot be attached to the surface, with good self-cleaning.



Imitation-Stone Characteristic

仿石纹铝单板特点

- 轻量化、刚性好、强度高

■ Lightweight, good rigidity, high-strength
- 阻燃性好：铝单板采用高强度铝合金及氟碳（PVDF）油漆，具有良好的阻燃性。

■ Good flame retardancy, aluminum veneer high strength aluminum alloy and the fluorine carbon paint (PVDF), has the good flame retardancy.
- 特殊分子结构使灰尘不能依附在表面，具有良好的自洁性。

■ Special molecular structure so that dust can not be attached to the surface, with good self-cleaning.
- 阻燃性好、符合消防要求：铝板饰件采用高强度铝合金及氟碳（PVDF）油漆或面板，具有良好的阻燃性，完全可以通过消防验收。

■ Good flame resistance, meets fire safety requirements: high-strength aluminum trim and aluminum fluorocarbon (PVDF) paint or panel with good flame resistance, can be passed fire inspection.
- 最佳的耐候性、自洁性和抗紫外线、耐酸、耐碱性能，在室外正常条件下，能够保证最佳的色彩，氟碳基料 KYNAR500、HYLAR5000，含量为 70%，能有效抵抗酸雨，空气污染及紫外线的侵袭。

■ Best weather resistance, self-cleaning and anti-UV, acid, alkali resistance, under normal outdoor conditions, to ensure the best color, fluorocarbon base KYNAR500, HYLAR5000, can effectively resist acid rain, air pollution and ultraviolet light.

包柱铝单板

Fashion building material best quality xintai

COLUMN CLADDING ALUMINUM SINGLE PLATE

包柱铝单板的应用常常令人耳目一新的惊喜与视觉享受，它的身影常常出现在酒店大堂、大型车站、机场及各种展厅等公共场所中。并且不同场合给人的愉悦也有所不同，也许与您相遇，您会觉得是那么的直接而简单，没有太多的深层元素，但是那么自然而然，好像天主造物本应如此。

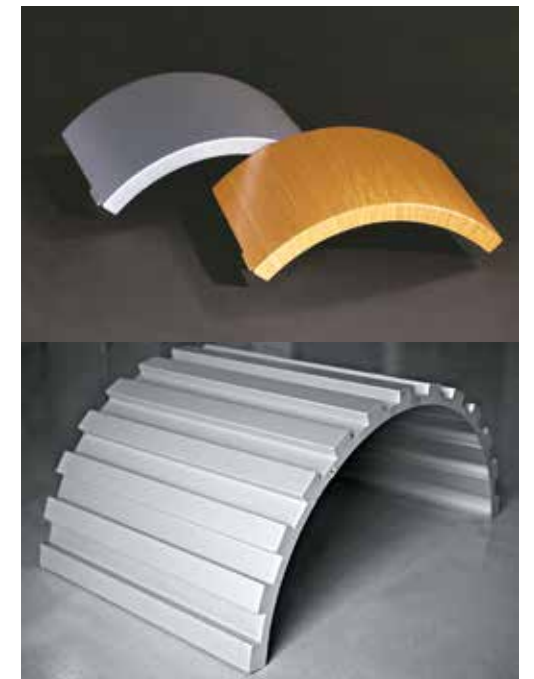
Surprise and visual application package column aluminum veneer often make a person find everything fresh and new enjoyment, its shadow often appear in the hotel lobby, large station, airport and all kinds of exhibition hall and other public places. And different occasions give pleasure is also different, perhaps with your event, you will think it is direct and simple, there is no deep elements too much, but then come very naturally, as if God creation should be like this.



Column Cladding Aluminum Single Plate Characteristic

仿木纹铝单板的特点

- 耐候性和耐腐蚀性好。采用 kynar-500、hylur500 为基料的 pvdf 氟碳漆可达 25 年不褪色。
- 涂层均匀、色彩多样。先进静电喷涂技术使得油漆与铝板间附着均匀一致，颜色多样，选择空间大。
- 不易玷污，便于清洁保养。氟涂料膜的非粘着性，使表面很难附着污染物，更具有良好向洁性。
- Weather resistance and good corrosion resistance. Using kynar-500, hylur500 as the base material of pvdf fluorocarbon paint can reach 25 years not leg color.
- Uniform coating, color diversity. Advanced electrostatic spraying the paint uniform, and aluminum attachments and various color, choose a large space.
- Is not easy to smear, easy cleaning and maintenance. Non adhesive coating film, the surface is very difficult to adhere to pollution, more good to clean.



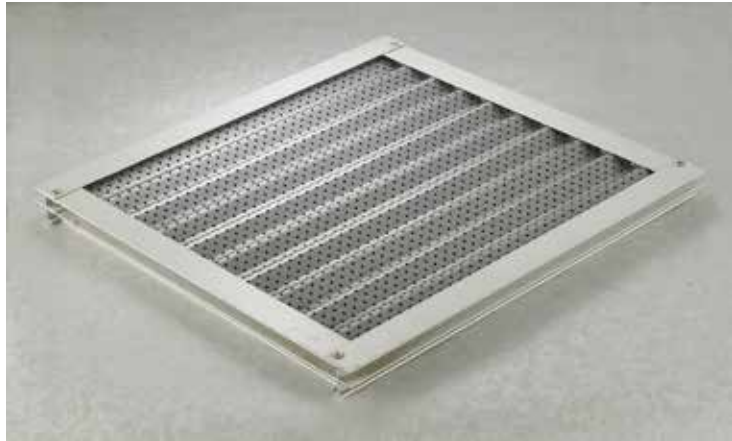
节能铝板

Fashion building material best quality xintai

ENERGY-SAVING ALUMINUM VENEER

昕泰建筑节能复合铝板采用特殊工艺制作而成的酚醛泡沫作为芯材，与正反面铝板复合而成。产品具有优异的隔热、保温、防火、隔音、节能等特点，是新型墙体装饰材料的的首选。昕泰建筑节能复合铝板系统不仅可以满足外墙保温，而且能够满足水密性、抗风性以及温湿度等指标，并可抵抗外界可能产生的机械碰撞。昕泰建筑节能复合铝板安装方式类似于铝合金单层幕墙板，免去了外墙保温常规在墙体表面另装保温材料的做法，具有降低成本、安装简便快速，效率高等特点，是新一代建筑节能产品的佼佼者。

Xintai building energy saving compound aluminum plate applies bakelite as core which is made of special technique and is laminated with aluminum plates. The product features outstanding advantages in heat isolation, fireproof, sound isolation and energy saving as the preferred product for new type wall decoration material. Xintai building energy saving compound aluminum plate system can not only meet the requirements of external wall heat preserving, watertight, wind pressure resisting with excellent temperature and humidity indices, additionally, it can also resist possible mechanical knock. The installation of Xintai energy saving compound aluminum plate is the same as Xintai aluminum alloy single layer curtain wall, therefore, it doesn't need to install heat preserving material on the wall surface, and features cost effective, fast installation and high efficiency as the outstanding fole for new generation building energy saving product.



搪瓷钢板

Fashion building material best quality xintai

ENAMEL STEEL

搪瓷板物料是可根据用户的要求，度身设计加工而成需要的形状和规格，而保持搪瓷的优良特性不改变，正是这样的特点，极大地丰富了搪瓷板应用的领域。迄今为止，搪瓷板物料的颜色是所有装饰材料中最丰富多样的，已远远超过天然石材、陶瓷材料，并且具备稳定的物理特性，人们可以按自己的喜好，选用进口铝板，经数控折弯加工，在铝板正反两面喷涂搪瓷釉，高温烧结而成，产品效果更佳。

Enamel plate material is available upon request, tailor-made processing required shape and size, while maintaining excellent characteristics of enamel does not change, it is this characteristic, greatly enriched the field of enamel plate applications. So far, the color enamel plate materials are all decorated in the most diverse materials, far more than natural stone, ceramic materials, and have a stable physical properties, it can be to your liking, imported aluminum by CNC bending processing, coating both sides of the aluminum enamel, high temperature sintering, the product better.

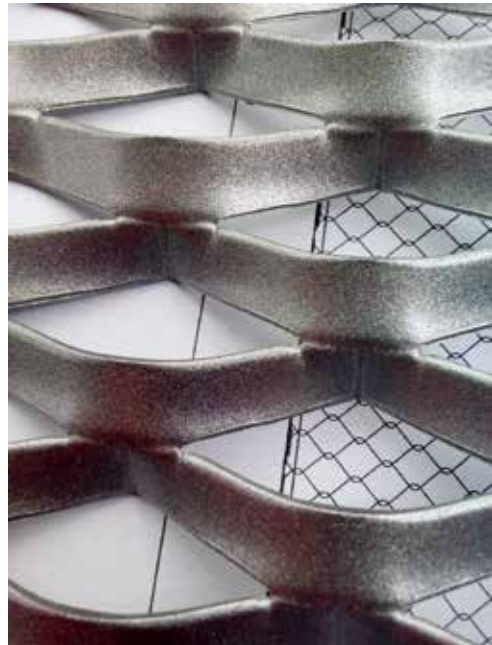
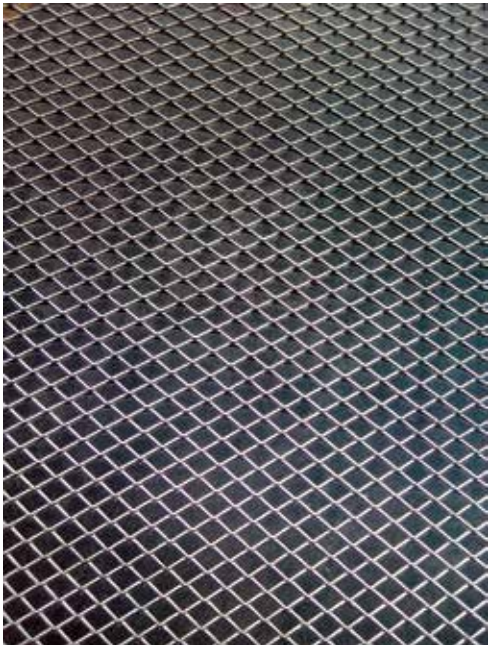
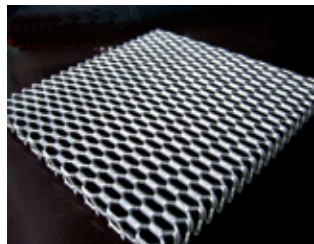


装饰网板

Fashion building material best quality xintai

DECORATIVE SCREEN BOARD

- 1、装饰网板吊顶是用 L、T 形轻钢 (或铝合金) 龙骨或金属嵌龙骨、条板卡式龙骨作龙骨架，用 0.5 ~ 1.0mm 厚的金属板材罩面的吊顶体系。
- 2、装饰网板吊顶的形式有方板吊顶和条板吊顶两大类。
- 3、装饰网板吊顶表面光泽美观，防火性好，安装简单，适用于大厅、楼道、会议室、卫生间和厨房吊顶。
- 4、装饰网板吊顶骨架的装配形式，一般根据吊顶荷载和吊顶装饰板的种类来确定。采用 U 形轻钢龙骨主龙骨与 T、L 形龙骨或嵌龙骨、条板卡式龙骨相配合的双层龙骨形式。



- 1、Decorative screen board sprung roof uses L, T-shaped light steel (or aluminum) or metal inlay keel keel, keel type of card for dragon skeleton, with 0.5 ~ 1.0mm thick sheet metal overlay ceiling system.
- 2、Two kinds: square shape sprung roof and ribbon sprung roof.
- 3、Decorative surface gloss appearance, fire-proof, easy installation, suitable for the hall, corridor, conference room, bathroom and kitchen ceiling.
- 4、The installation form of skeleton, generally based on the type of load and ceiling decorative ceiling panels to determine. U-shaped metal frame and main keel T, L-shaped keel or embedded keel, double keel keel form of board-type mating.



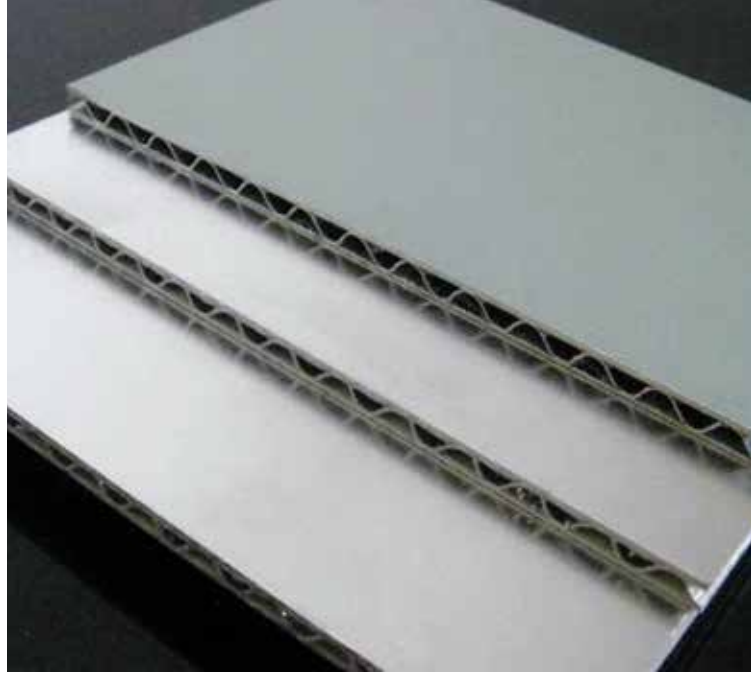
铝瓦楞板

Fashion building material best quality xintai

ALUMINIUM CORRUGATED BOARD

一种新型的装饰材料，其原理与纸板类同，由 0.7-1.0MM 的面板、0.2-0.3MM 厚度的瓦楞芯制作成 6-8MM 高的瓦楞芯和 0.5-0.7MM 厚的背板通过热硬化性树脂粘合剂加压复合而成，具有节能环保（隔热保温性能），隔声降噪，良好的平整度，重量轻等优越性能，而且可以大规格加工，最宽尺寸可达 1500MM，长度可达 4000MM，性价比高的瓦楞板目前深得客户喜爱而得到广泛应用，面板可以采用聚酯漆或氟碳漆预滚涂材料，适合室内场所天花或墙面装饰的需求。

A new type of decorative material, its principles similar to paperboard, corrugated surface plate of 0.7-1.0MM thickness ,0.2-0 .3 MM thickness made into 6-8MM high performance corrugating medium and 0.5-0.7MM thick backplane through the heat pressurized curing resin adhesive compound is made with energy saving (insulation properties), acoustic noise, good flatness, light weight, superior performance, and can process large size, the widest size up to 1500MM , length up to 4000MM, cost-effective corrugated board currently won the customer favorite and widely used, the panel can be used polyester paint or fluorocarbon seven pre-roll material, suitable for indoor spaces ceiling or wall decoration needs.



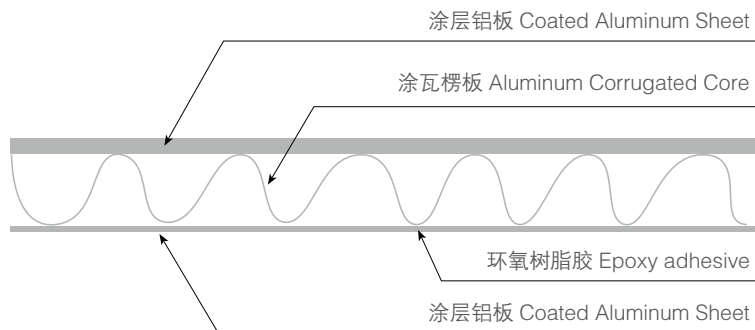
瓦楞复合板

Fashion building material best quality xintai

CORRUGATED COMPOSITE BOARD

瓦楞复合板是一种将铝合金面板，底板及铝瓦楞芯真空复合而成的全铝合金复合板。三盛彩涂铝卷，表面涂有氟碳涂层，耐候性极佳，有优异加工性：可满足切割、连接、折弯，弯圆等多样的方法的加工需求，是生产铝合金瓦楞复合板的首选材料。

Corrugated composite panel is a kind of aluminum panels, vacuum the floor and corrugated aluminum composite made of all aluminum composite panels. Sam Sung coated aluminum coil, coated with a fluorocarbon coating, excellent weather resistance, and excellent workability: cutting to meet, connect, bend, and bend round and other processing needs of a variety of methods, the production of corrugated aluminum composite the preferred material plate.



Corrugated Composite Board Parameter

瓦楞复合板参数

- 应用场所：办公室、走廊、商场、医院、机场、地铁、展览中心、体育馆等
 - 材 质：铝合金
 - 材料厚度：面板 0.7–1.0MM、瓦楞芯 0.2–0.3MM 厚，高度 6–8MM，底板 0.5–0.6MM
 - 常用规格：根据客户要求定制规格
 - 加工工艺：折弯成型和加热加压复合
 - 表面处理：聚酯或氟碳预滚涂板，静电聚酯粉末喷涂
 - 安装系统：J 槽和 C 型龙骨系统
- Applications: offices, corridors, shopping malls, hospitals, airports, subway, exhibition centers, stadiums, etc.
 - Material: Aluminum
 - Material thickness: Panel 0.7–1.0MM, corrugated 0.2–0.3MM thick, height 6–8MM, floor 0.5–0.6MM
 - Common Specifications: according to customer requirements specifications
 - Processing: bending forming and heat and pressure composite
 - Finish: polyester or fluorocarbon pre-roll plate, electrostatic polyester powder coating
 - Installation System: J and C trough keel system



铝蜂窝板

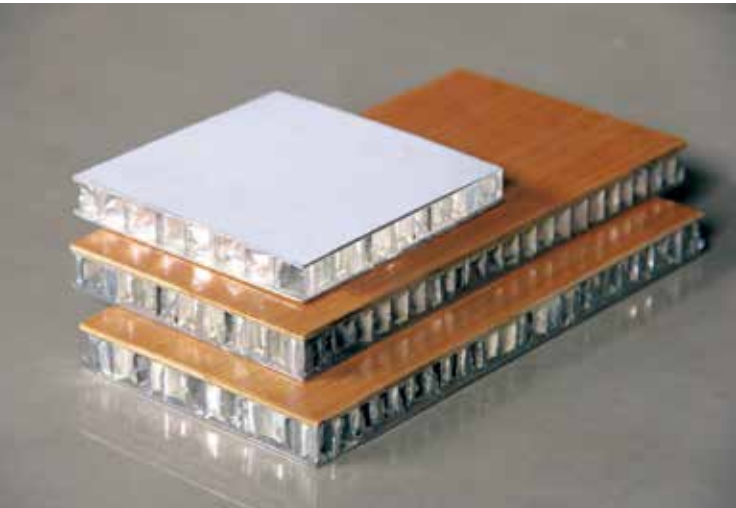
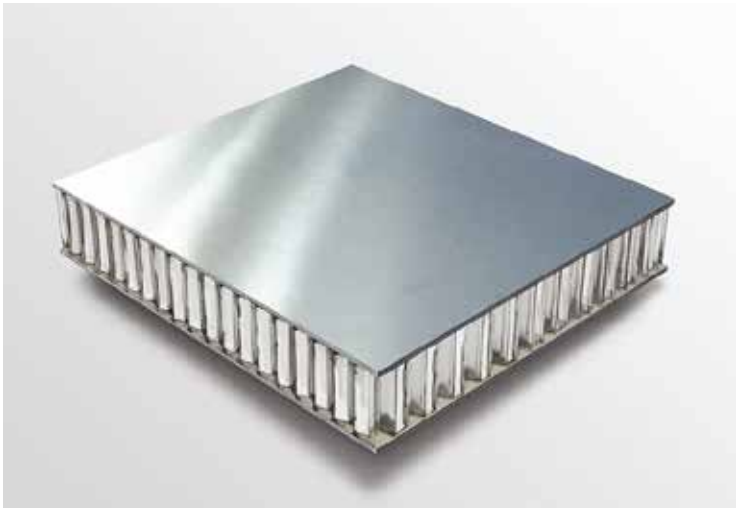
Fashion building material best quality xintai

ALUMINIUM HONEYCOMB BOARD

自然界蜜蜂建造的正六边形蜂巢，经过科技工作者的计算，惊人地发现蜂巢这种正六边形结构，是一种在同等强度下，用量最少，最合理、最科学的结构。

目前，这种结构已广泛应用于航空、航天，其特点为重量轻、强度高，尤其是钢度高，抵抗能力强，寿命长。本公司以高科技产业为主体，充分利用航天技术，将其应用于民用、工业、建筑业等。产品深受各界人士的好评。

幕墙铝蜂窝板主要应用于大厦的外墙装饰，该产品选用优质的进口原材料，加工尺寸精确。表面采用先进的预辊涂氟碳漆工艺，可保持三十年不变色。本公司采用双组份高分子环氧胶膜和双组份改性环氧树脂，通过全封闭无尘作业，用全自动蜂窝板复合生产设备通过高压加温复合而成，使铝蜂窝板粘接更牢固，更抗弯挠，板块更平直，质量更可靠。可根据建筑设计要求制作弧板、折板及梯形板等各种异形蜂窝板，所有的圆弧形、L形、U形等非平面的异形板块都是通过模具一次性成型的，同一项目只采用同批辊涂铝卷，无色差现象。属一种高质量、轻质、高强度、外表豪华富丽的绿色环保装饰材料。



Natural bee hive hexagon construction, science and technology workers has been calculated, and surprisingly found that such a regular hexagon honeycomb structure is a strength in the same amount at least, the most reasonable and scientific structure. Currently, such a structure has been widely used in aviation, aerospace, which is characterized by light weight, high strength, particularly steel and high resistance, long life. Our company adopts high-tech industries as body; makes full use of space technology, which was used in civil, industrial, construction and so on. Products are popular and get the praise of people.

Curtain wall honeycomb aluminum panels are mainly used in wall decoration of the building, the product of high quality imported raw materials, processing precise size. Surface using advanced pre-roll coating fluorocarbon technology, can maintain three years without discoloration. Using the two-component Epoxy our film and two-component polymer modified epoxy resin, by fully enclosed dust-free operation, with automatic honeycomb composite panel production equipment heated by high-pressure composite made, so stick aluminum honeycomb panels take stronger and more flexible bending, plate straighter, more reliable quality. According to architectural design requirements arc board, folding board and other panels and trapezoidal shaped honeycomb panels, all arc-shaped, L-shaped, U-shaped non-planar shaped plates are formed by die-off, the same item only using the same batch roller coating aluminum coil, no color phenomenon. Is a high-quality, light weight, high strength, appearance opulent green decorative material.

The Scope Of Application

应用范围

由于石材铝蜂窝板具有重量轻、辐射污染小、节省石材材料、板面尺寸大等特点，可以用来吊顶、幕墙、内装墙面、地面等，越来越广泛的应用在建筑、车辆、船舶等装饰装修中。

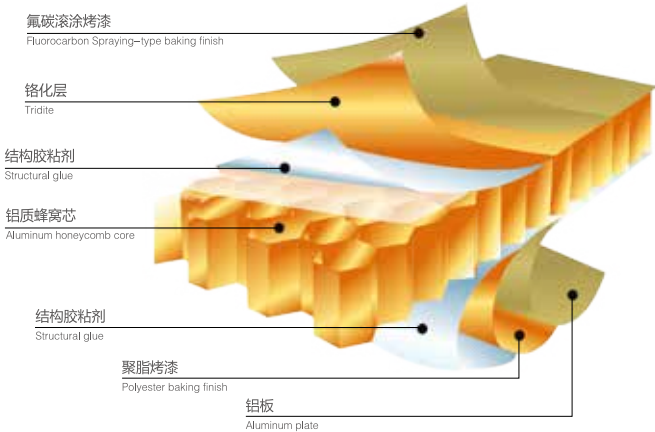
Because of the stone and aluminum honeycomb board has the advantages of light weight, small pollution, save the radiation characteristics of stone material, plate size is large, can be used to the ceiling, curtain wall, interior walls, the ground, more and more widely used in buildings, vehicles, ships and other decorative decoration.

Product Raw Materials

产品原材料

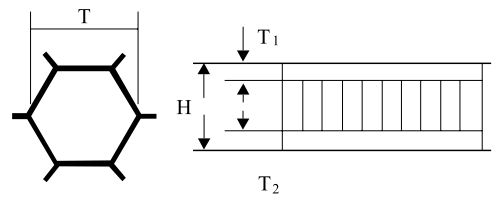
- 铝面板：主要选用优质 3003H24 合金铝板或是 5052AH14 高锰合金铝板为基材，厚度为 0.7–1.5mm 氟碳辊涂板。
- 铝底板：底板厚度为 0.5–1.0mm
- 铝蜂窝：芯材采用六角形 3003H18 型铝蜂窝，铝箔厚度 0.04–0.07、边长 5–6mm。
- 胶粘剂：采用双组份高分子环氧胶膜和双组份改性环氧树脂。

- Aluminum panel:fluorocarbon coil coating panel, which mainly selects high quality 3003H24 alloy aluminum panel or 5052AH14 high meng anese alloy aluminum panel as the basic material, with a thickness of 0.7–1.5mm.
- Aluminum bottom panel:thickness 0.5–1.0mm.
- Aluminum honeycomb:the core material adopts model 3003H18 hexagon Aluminum foil being 0.04–0.07mm thickness with side length of 5–6mm.
- Adnesives:adopts bi–component polymeric epoxide membrane and bi–component modified epoxy resins.



Honeycomb Plate Form

蜂窝板构成形式



- | | |
|----------------------------|---|
| ■ H :蜂窝总厚度 | ■ H : The cellular total thickness |
| ■ T ₁ :蜂窝厚度（面板） | ■ T ₁ : Honeycomb thickness (panel) |
| ■ T ₂ :蜂窝厚度（底板） | ■ T ₂ : Honeycomb thickness (bottom) |
| ■ T :蜂窝芯孔直径 | ■ T : Honeycomb core hole diameter |

Honeycomb Board Characteristic

蜂窝板的特点

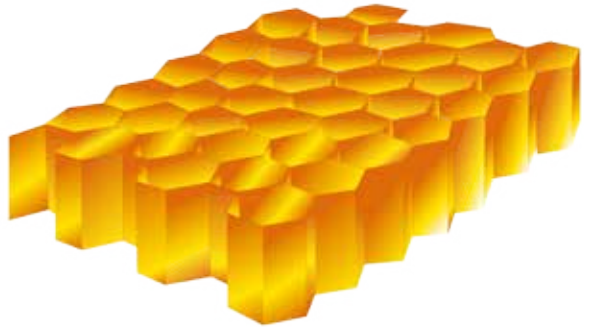
- | | |
|---------|-------------------------------|
| ■ 材质轻 | ■ Light Material |
| ■ 刚性大 | ■ Rigidity |
| ■ 强度高 | ■ In High Strength |
| ■ 耐腐蚀 | ■ Corrosion |
| ■ 防火 | ■ In The Fire |
| ■ 隔热 | ■ Insulation |
| ■ 加工性能好 | ■ Good Processing Performance |
| ■ 维护成本低 | ■ In Low Maintenance Cost |

Imitation Wood Honeycomb Board

铝蜂窝芯

铝蜂窝芯采用优质合金铝箔，经过特殊工艺处理制成的六边形蜂窝芯子，具有质轻强度高，防火，防潮，隔音热的环保等特点。该产品已广泛用于洁净室墙板内芯，铝幕墙板内芯等复合建筑，装饰板材领域。

Aluminum honeycomb core is made of high quality alloy foil honeycomb core, after special processing is made, with light weight and high strength, fire prevention, moistureproof, sound insulation heat environmental characteristics. The product has been widely used in clean room wall inner core, aluminum curtain wall plate inner core composite building, decoration plate.



铝蜂窝芯示意图 Sketch Map



Pre-Roll Coating Plate

预辊涂板

幕墙铝蜂窝板表面采用涂料是一次性完成的预辊涂氟碳聚合物涂料，能有效地控制铝板材的表面油漆色差和平整度，成功消除传统喷涂工艺的颗粒难题，色彩均匀细腻、柔和亮丽。氟碳聚合物涂料其主要成分含有不少于 70%Kynar500 或 Hylar5000 的氟碳树脂，是一种分子结构最稳定的耐久性结合涂料，涂装氟碳涂料的产品能长期抵挡阳光中的紫外线照射，工业废气、酸雨及化学品的侵蚀，能长期保持颜色的稳定和光洁，涂层不剥落、龟裂、不粉化等。

Curtain wall honeycomb aluminum panel surface with paint is the time to complete the pre-roll coating fluorocarbon polymer coating, can effectively control the paint color and the flatness of the surface of aluminum sheet, the successful elimination of the traditional spraying particles puzzle, color uniformity and delicate, soft and bright . Its main ingredient fluorocarbon polymer coating containing not less than 70% Kynar500 or Hylar5000 fluorocarbon resin, is a molecular structure of the most stable combination of durability paint, fluorocarbon paint coating products can withstand long-term ultraviolet radiation in sunlight, industrial emissions, acid rain and chemical erosion, maintain long-term color stability and smooth coating does not peel, crack, not powder and so on.

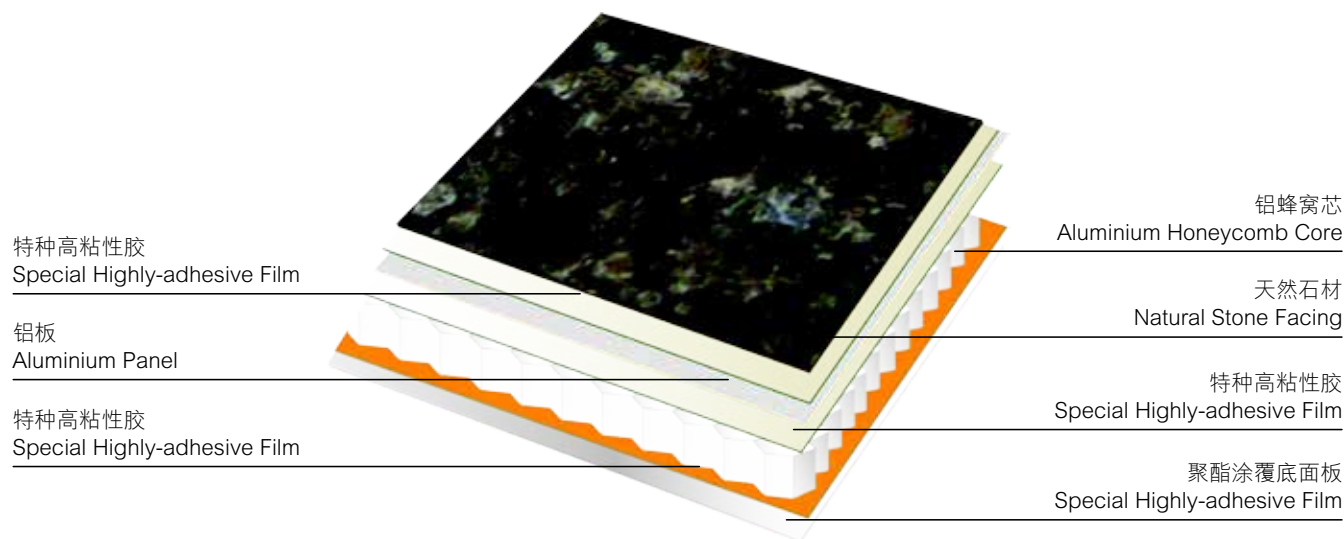
石材蜂窝板

Fashion building material best quality xintai

STONE ALUMINIUM HONEYCOMB PANEL

超薄型石材蜂窝板是昕泰引进的意大利切割设备和技术，将天然的花岗岩，大理石切成 3-5mm 厚的薄片，再利用法国航空复合技术将之与铝蜂窝生产的高科技含量产品。超薄型石材蜂窝板保持了天然石材的美观，克服了天然石材脆且易碎，重量大等特点。由于在石材薄牌与铝蜂窝中间加上优质铝板作为过渡层，使产品耐冲击性变高。该产品已达到国际领先水平并填补了国内空白，广泛用于建筑幕墙及室内外装饰，是当今世界上最先进的绿色环保材料之一。

With imported advance cutting and grinding machines form Italy, Xintai first cuts granites and marbles and marbles into 3-5mm veneer, then bonds the stone veneer with aluminum honeycomb structure to form honeycomb panels with imported aeronautic bonding high-tech from France. Xintai super-thin stone honeycomb panels maintan the beauty of nature marbles and granite with overcome their fragile and heavy disadvantages. Xintai puts an aluminum sheet between the stone veneer and aluminum honeycomb. so that the products have good impact resistance and flexural strength. Xintai super-thin stone honeycomb panels are in a world leading role and are the first one in China, which are widely used as building cladding wall and interior and exterior decorative materials.

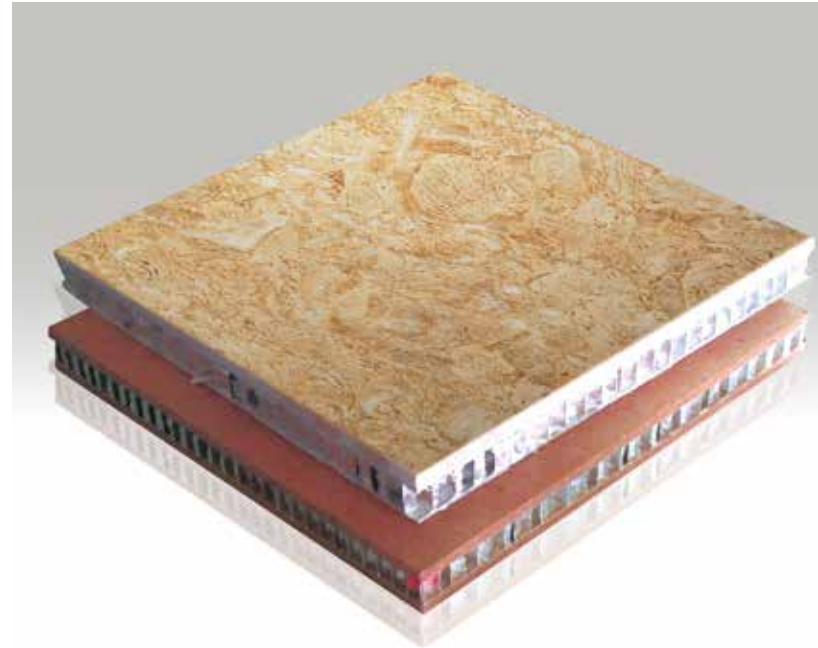


石材蜂窝板示意图 Sketch Map

Product Feature

产品特点

- 重量轻：标准板每平方仅重 16kg, 与 6mm 厚的玻璃相当，仅是同厚度石材重量的 1/5。
 - 抗冲击：抗冲击强度比 3cm 厚的花岗岩大 10 倍。
 - 耐腐蚀：经过酸冻测试（-35°C~80°C）循环 120 次，强度没有任何降低。
 - 易施工：安装方便，费用少。
 - 高性比：隔音、隔热效果好，价格低，仅为进口同类产品的 1/3。
- Light weight: standard plates per square weighs only 16kg, with 6mm thick glass rather, only the thickness of the stone with the weight of 1/5.
 - Impact: impact strength than 3cm thick granite 10 times.
 - Corrosion resistance: After the acid test frozen (-35°C ~ 80°C) cycle 120 times, strength no lower.
 - Easy construction: easy installation, low cost.
 - High sex ratio: sound and heat insulation effect, low prices, imports of similar products only 1/3.



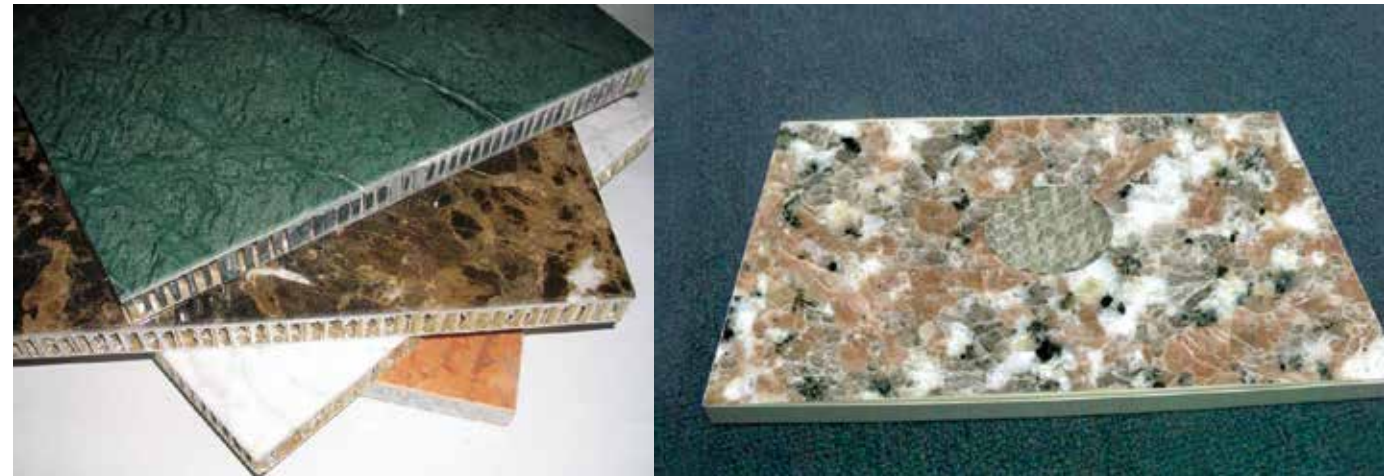
仿石材蜂窝板

Fashion building material best quality xintai

STONE GRAIN HONEYCOMB PANELS

仿石材蜂窝板，铝质，通过仿照石材纹理和质感的喷涂和贴纸复合而成，有着质量轻，环保，节能，刚性强，不变形，隔音隔噪，防水，防火，防腐，保温，不存在热胀冷缩的优点，适用在超五星级酒店，机场，高层的写字楼，会所，豪宅，游轮上。

Stone grain honeycomb panels, aluminum, stone textures modeled and textured by spraying and stickers composite made with light weight, environmental protection, energy saving, rigidity, no distortion, noise noise-isolation, waterproof, fireproof, anti-corrosion, insulation, does not exist advantages of thermal expansion and contraction for the super five-star hotels, airports, high-rise office buildings, clubs, luxury cruise ship.





仿木纹蜂窝板

Fashion building material best quality xintai

WOOD GRAINING HONEYCOMB PANELS

一种效仿大自然而又超越大自然的产品。它独特优点在于：丰富的色彩和表面纹理效果，能长期在日照下不褪色、不龟裂、不脱落的杰出性能。其特有的分子结构，阳光中的紫外线透过率仅为千分之一，使产品的抗老化性和耐候性还远超过其它任何一种喷涂产品。用它对各种铝型材及其它金属材料表面进行加工装饰，从而实现新的设计理念。

One kind of emulate nature but beyond nature's products. Its unique advantages: a wealth of color and surface texture effects, long-term does not fade in the sunlight, no cracks, no shedding outstanding performance. Its unique molecular structure, the sun's UV transmittance of only one-thousandth of that product aging and weathering resistance is far more than any other kind of spray products. Processing all kind of aluminum or other decorative metal material is a new design concept.

不锈钢蜂窝板

Fashion building material best quality xintai

STAINLESS STEEL HONEYCOMB PANEL

采用高强度不锈钢板作为面、底板与铝蜂窝芯经高温高压复合制造而成的复合板材，是一种高档、防火、环保的夹层结构复合材料。不锈钢蜂窝板可折可弯，加工型能好，表面处理有多种选择。另外在产品的尺寸、形状、颜色等方面提供定制化板材，不仅可应用与幕墙装饰，而且使用与包柱、隔断、挑檐、户内外吊顶等，应用领域广泛。

Composite plate with high strength stainless steel plate as floor surface, and aluminum honeycomb core by high temperature high pressure composite manufacturing and become, is a sandwich structure composite high-grade, fire, environmental protection. Stainless steel honeycomb panel can be folded bending, processing is good, the surface has a variety of treatment choices. In addition to providing customized plate in the product size, shape, color and so on, can be not only applied to the curtain wall decoration, and the use and column, partition, cornice, outdoor and indoor ceiling, wide application field.

Stainless Steel Honeycomb Panel Characteristics

不锈钢蜂窝板特点

- 耐腐蚀
- 平整度极佳
- 加工简单方便
- 抗弯刚度大、质量小
- 不锈钢、铝均可回收利用，有利于环境保护
- 视觉光整且可根据使用环境及喜好选择不同的表面光泽度

- Corrosion resistance
- Excellent evenness
- Simple and convenient processing
- Large flexural rigidity and small mass
- Stainless steel and aluminum can be recycled, and it is beneficial to environmental protection
- Visual finishing and selection of different surface gloss according to the environment and preferences



大型集成吊顶

Fashion building material best quality xintai

LARGE-SCALE INTEGRATED CEILING

产品特点 Product Feature

- 大型集成吊顶多功能模块，是昕泰自主研发而成的最新集成吊顶天花系统。拥有自主知识产权。
- 本集成吊顶集：扬声器、喷淋、灯具总成、隔音材料于一体。
- 主要应用于博物馆，会展中心等大型集成吊顶。
- A large-scale multi-functional integrated ceiling module is the updates integrated ceiling system that R&D by Xintai who own intellectual property rights.
- The integrated ceiling: speaker, spray, light assembly, insulation materials in one.
- Mainly used in ceiling museums, exhibition centers.



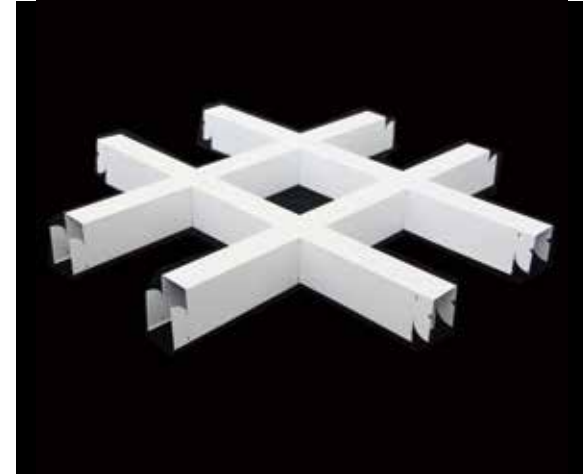
格栅天花

GRID CEILINGS

Fashion building material best quality xintai

格栅天花本品具有防火耐用、安装简易，美观大方，疏风散热。是一种开放式的网格设计结构，适用于各大型商场、休闲会所、酒吧、机场、写字楼等场所吊顶装饰。

Grille smallpox this product has the fireproof durable, the installation is simple, the artistic appearance is generous, the sparse wind heat dissipation. The utility model is an open grid design structure, which is suitable for ceiling decoration of various large shopping malls, recreational clubs, sprinkling bars, airports, office buildings, etc..

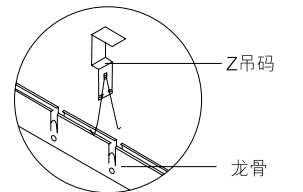
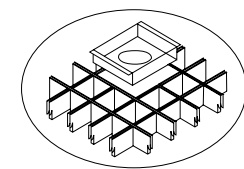
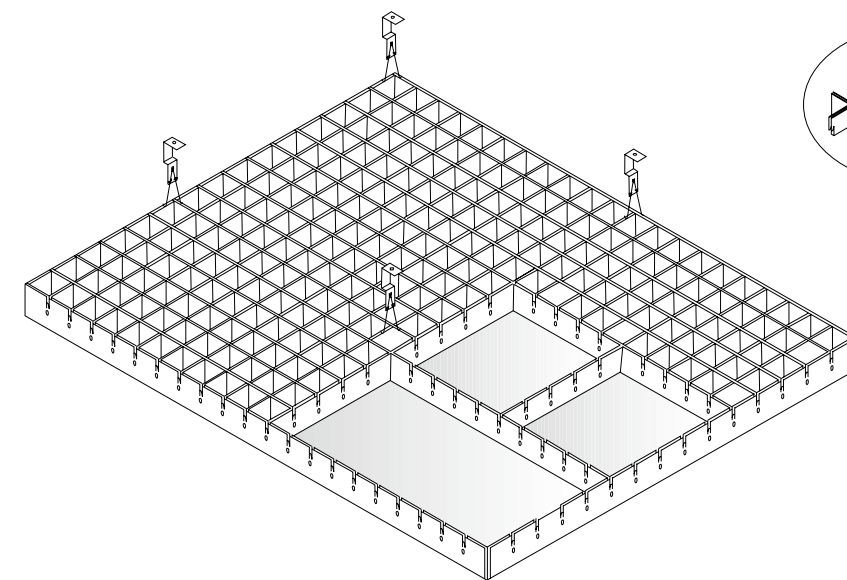


Installtion Method

安装方法

- 先用 38# 系列轻钢龙骨（或万能角铁），拉好龙骨架水平（或骨间隔 2-1.5m）
- 将格子天花在地下先分开格预装。
- 将格子天花主骨直接与原身卡口连接。按照格子天花固定的尺寸。用专卡码连接在 38# 轻钢龙骨上（或万能角铁上）。
- 将预装好的格子天花连接格子主骨，稍调整好水平面即可。

- Firstly, use 38# series lightgauge steel joist (or universal angle iron), arrange the grid frame in level (or with a space of 2-1.5m)
- Preinstall the grid ceiling on the ground separately.
- Connect the main grid of the grid ceiling directly with the bayonet, use dedicated clip pieces to fix the ceiling to the 38# series lightgauge steel joist (or universal angle iron) according to the dimension of the ceiling.
- Connect the preinstalled ceiling to the main grid, and then generally adjust the level.



图示 .Graphic

型材天花

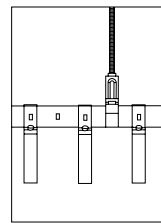
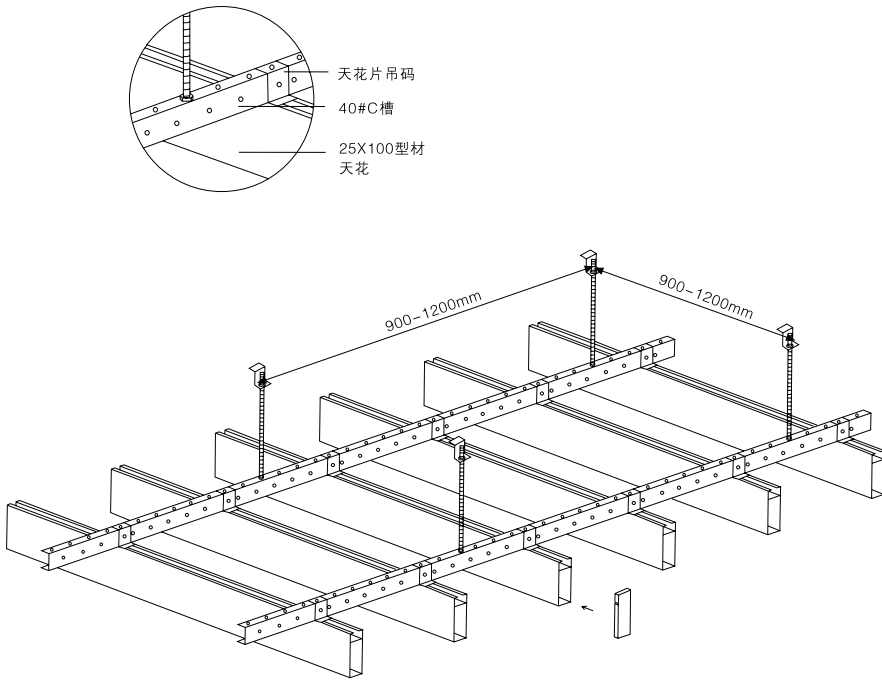
Fashion building material best quality xintai

PROFILE CEILINGS

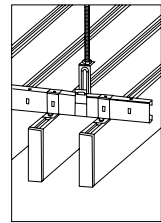
Installtion Method

安装方法

- 按设计师的要求测量出通透式U型天花安装后的高度，确定水平线，同时在四周墙体同一水平线上固定好收边角。
- 确定施工方向，并按标准 1200mm 距离在天面墙体上打吊装孔，同时用膨胀螺丝固定角码吊杆。
- 固定轻钢龙骨的吊件及轻钢龙骨，将轻钢龙骨调至水平，相互平行，间距为标准 1200mm。
- Measure the height of the installed U type ceiling according to the requirement of the designer, determine the level line, and at the same time fix edge angle parts on the surrounding walls at the same level line.
- Determine the construction direction, and then make hanging holes on the walls around the ceiling with a space of 1200mm between each hole, and use expansion screws to fix the corner irons with hanging rods.
- Fix the lightgage steel joists and their hanging pieces, adjust the lightgage steel joists to level, they should parallel to one another with a standard space of 1200mm between any two grids.

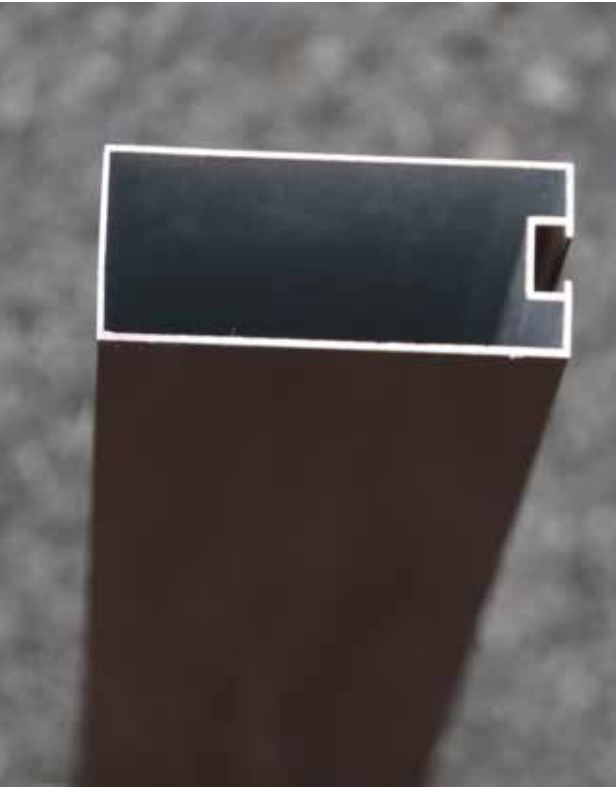


Baffle Ceiling System
1. UL Ceiling panel
2. UL Bracket(UL-101)
3. Positioned Carrier(UL-102)
4. Carrier Bracket(UL-103)
5. End Cap(UL-104)
6. Panel Connector(UL-162)



垂直条型U式天花系统
UL条型天花
UL吊码
定位C型龙骨
定位滑槽码
封口盖
天花片码

图示 .Graphic



通透式 U 型天花

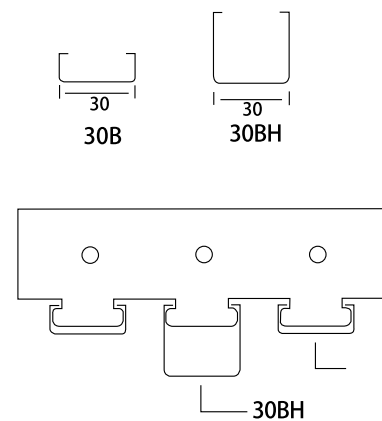
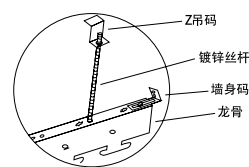
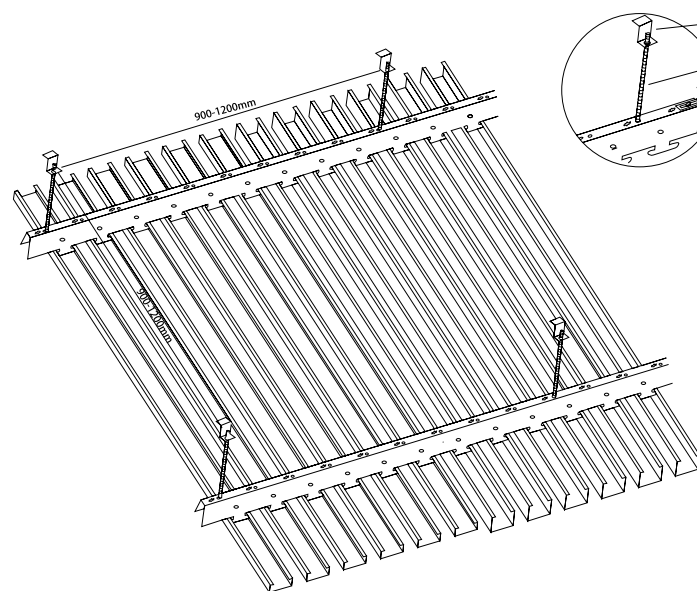
Fashion building material best quality xintai

U-TYPE SUSPENDED CEILINGS

Installtion Method

安装方法

- 按设计师的要求测量出通透式U型天花安装后的高度，确定水平线，同时在四周墙体同一水平线上固定好收边角。
- 确定施工方向，并按标准 1200mm 距离在天面墙体上打吊装孔，同时用膨胀螺丝固定角码吊杆。
- 固定轻钢龙骨的吊件及轻钢龙骨，将轻钢龙骨调至水平，相互平行，间距为标准 1200mm。
- Measure the height of the installed U type ceiling according to the requirement of the designer, determine the level line, and at the same time fix edge angle parts on the surrounding walls at the same level line.
- Determine the construction direction, and then make hanging holes on the walls around the ceiling with a space of 1200mm between each hole, and use expansion screws to fix the corner irons with hanging rods.
- Fix the lightgage steel joists and their hanging pieces, adjust the lightgage steel joists to level, they should parallel to one another with a standard space of 1200mm between any two grids.



图示 .Graphic



木纹转印方通

Fashion building material best quality xintai

WOODEN GRAIN ALUMINUM

木纹铝板是通过喷涂以及热转印或辊涂的工艺，在铝板表面涂敷木纹装饰涂层。铝板表面的木纹表面具有色彩丰富、自然逼真的特点。木纹纹理不仅能在平面铝板上应用，更能在异型铝板表面上应用，从而提高了产品外观装饰效果及使用价值，美化了建筑空间环境，为设计师提供了更为广阔的构想空间，以创造出更独特美观的作品。

The wooden grain aluminum panel is made through coating the surface with wooden grain decoration paint by using technologies like flame spray, heat transferring print and roller coating. The wooden grain can be clear fibril grain or coarse imitated wooden grain, and the color and effect are natural and vivid. The wooden grain can bot only use in aluminum panel but also the abnormal-shaped plate, so that to increase the decoration effects and use value. With the broader image space brought by this technology, designers can product more special and beautiful works to decorate our life.

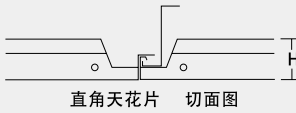
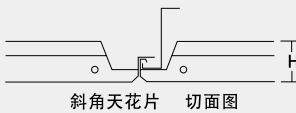
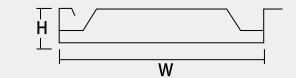
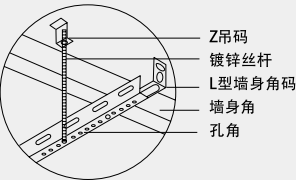
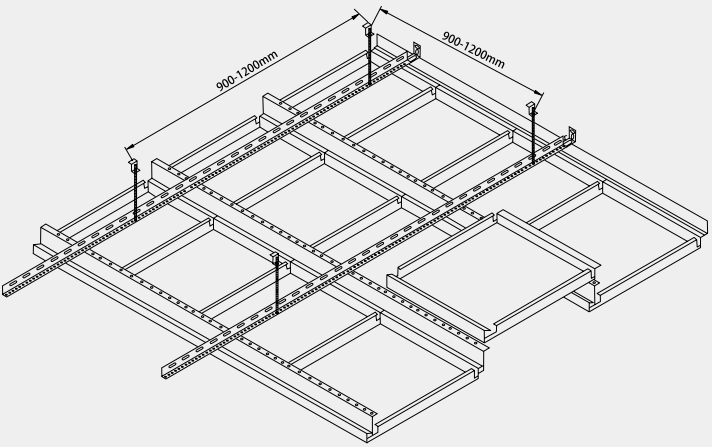
勾搭式天花

Fashion building material best quality xintai

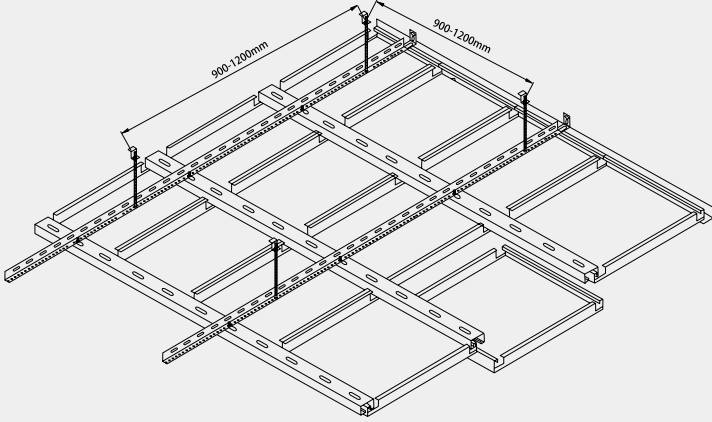
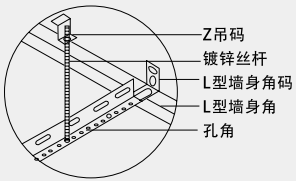
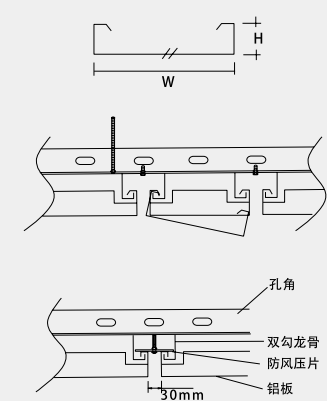
FLIRTING STYLE CEILING

勾搭式天花系统由专用配套的龙骨作为悬挂系统，上层以 2mm 厚孔角为主道，按 1200mm 间距，配合 Z 吊码及镀锌丝杆，下层为 Deko J 型挂勾龙骨，承托天花片。

Hooking and hanging ceiling system uses a special grid as the hanging system, the upper layer has main angle of spot holes, and Z type hanging parts and zinc plated screw rods distributed with a space of 1200mm between each one. The lower layer consists of Deko J type hooking grid, sued to support ceiling pieces.



图示 1.Graphic 1



图示 2.Graphic 2

Installtion Method

安装方法

- 双勾搭天花系统由专用配套的龙骨作为悬挂系统，上层以 2mm 厚孔角为主骨，按 1200mm 间距，配合 Z 吊码及镀锌丝杆，下层为 Deko 双勾型挂勾龙骨，承托天花片。
- Hooking and hanging ceiling system uses a special grid as the hanging system, the upper layer has main angle of spot holes, and Z type hanging parts and zinc plated screw rods distributed with a space of 1200mm between each one. The lower layer consists of Deko J type hooking grid, sued to support ceiling pieces.





- 项目名称：珠海大剧院
- 项目面积：8000m²
- 使用材质：双曲铝单板、铝天花



- 项目名称：港珠澳大桥澳门边检大楼
- 项目面积：90000m²
- 使用材质：氟碳铝单板、铝天花、艺术镂空板、包柱铝单板

听泰在每件作品中留下不可复制的印痕。
充满故事的神秘岁月，更将其淬炼成绝无仅有的
个性珍品。此时此刻，将日常生活演绎成一
场场惹人惊羡的传奇。

Xintai leaves an impression which is not
reproducible, in each of its works. The mysterious
years full of stories even make it become a
peerless distinctive treasure. At this moment,
deduce the daily life into wondrous and envying
legends.

工程实例 THE SAMPLES PROJECT

Fashion building material best quality xintai

- 项目名称：港珠澳大桥收费站
- 项目面积：11000m²
- 使用材质：氟碳铝单板、铝蜂窝板

工程实例

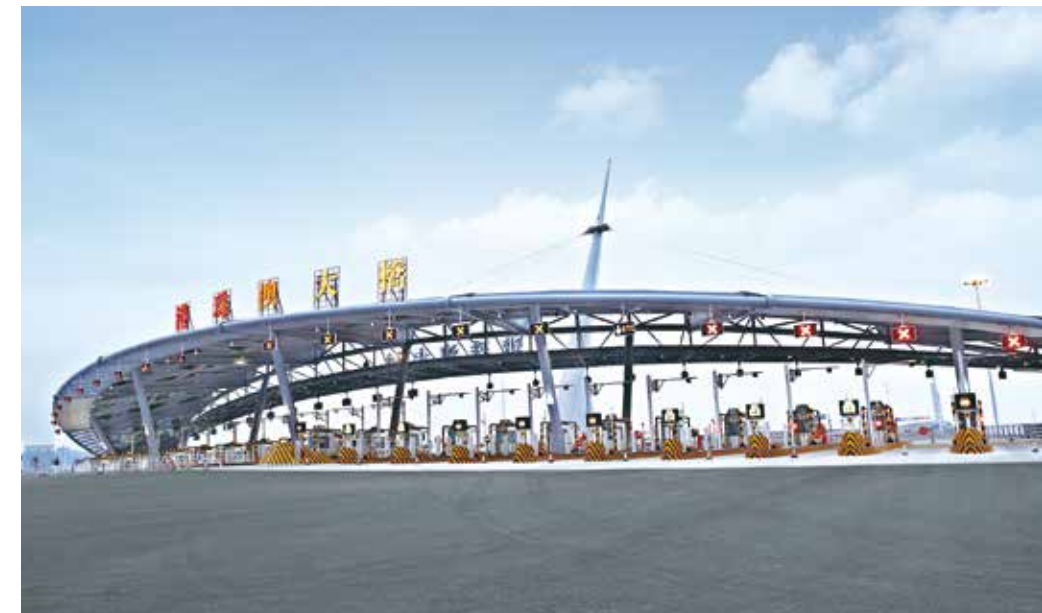
THE SAMPLES PROJECT

Fashion building material best quality xintai

昕泰用现代的色彩包裹传统的灵魂，简化的线条、蜿蜒的图腾，借着这样一种风格，让长期停留在巴黎、纽约、米兰的眼光，重新聚焦中国美学。

Xintai uses the colors of the modern times to wrap the traditional soul. Its simple lines and sinuous totems borrow such a style to let eyes staying in Paris, New York and Milan for a long time focus on China's aesthetics again.

港珠澳大桥全景
Panoramic view of the
Hong Kong Zhuhai Macao Bridge





- 项目名称：铜仁凤凰机场
- 项目面积：110000m²
- 使用材质：幕墙铝单板、双曲铝单板、异形天花

昕泰在每件作品中留下不可复制的印痕。充满故事的神秘岁月，更将其淬炼成绝无仅有的个性珍品。此时此刻，将日常生活演绎成一场场惹人惊羡的传奇。

工程实例

THE SAMPLES PROJECT

Fashion building material best quality xintai

Xintai leaves an impression which is not reproducible, in each of its works. The mysterious years full of stories even make it become a peerless distinctive treasure. At this moment, deduce the daily life into wondrous and envying legends.



- 项目名称：三亚凤凰国际机场
- 项目面积：750000m²
- 使用材质：幕墙铝单板、双曲铝单板
艺术镂空板



昕泰用现代的色彩包裹传统的灵魂，简化的线条、蜿蜒的图腾，借着这样一种风格，让长期停留在巴黎、纽约、米兰的眼光，重新聚焦中国美学。

Xintai uses the colors of the modern times to wrap the traditional soul. Its simple lines and sinuous totems borrow such a style to let eyes staying in Paris, New York and Milan for a long time focus on China's aesthetics again.

THE SAMPLES PROJECT

Fashion building material best quality xintai

- 项目名称：常德机场
- 项目面积：56800m²
- 使用材质：幕墙铝单板、双曲铝单板、造形天花

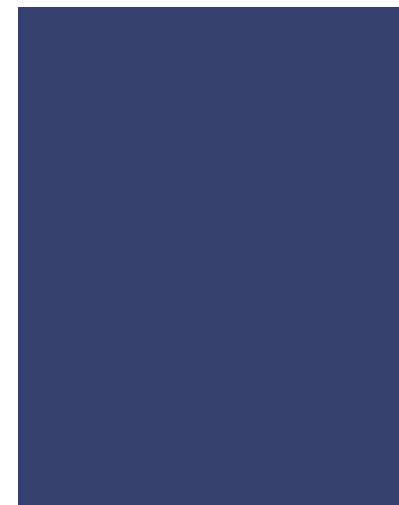




THE SAMPLES PROJECT

Fashion building material best quality xintai

- 项目名称：张家界荷花机场
- 项目面积：35000m²
- 使用材质：造型铝单板





工程实例 THE SAMPLES PROJECT

Fashion building material best quality xintai

- 项目名称：蒙内铁路
- 项目面积：80000m²
- 使用材质：幕墙铝单板、双曲铝单板、铝天花



- 项目名称：肯尼亚高铁站
- 项目面积：80000m²
- 使用材质：幕墙铝单板、双曲铝单板、铝天花



昕泰在每件作品中留下不可复制的印痕。充满故事的神秘岁月，更将其淬炼成绝无仅有的个性珍品。此时此刻，将日常生活演绎成一场场惹人羡慕的传奇。

Xintai leaves an impression which is not reproducible, in each of its works. The mysterious years full of stories even make it become a peerless distinctive treasure. At this moment, deduce the daily life into wondrous and envying legends.



- 项目名称：南宁东站
- 项目面积：70000m²
- 使用材质：幕墙铝单板

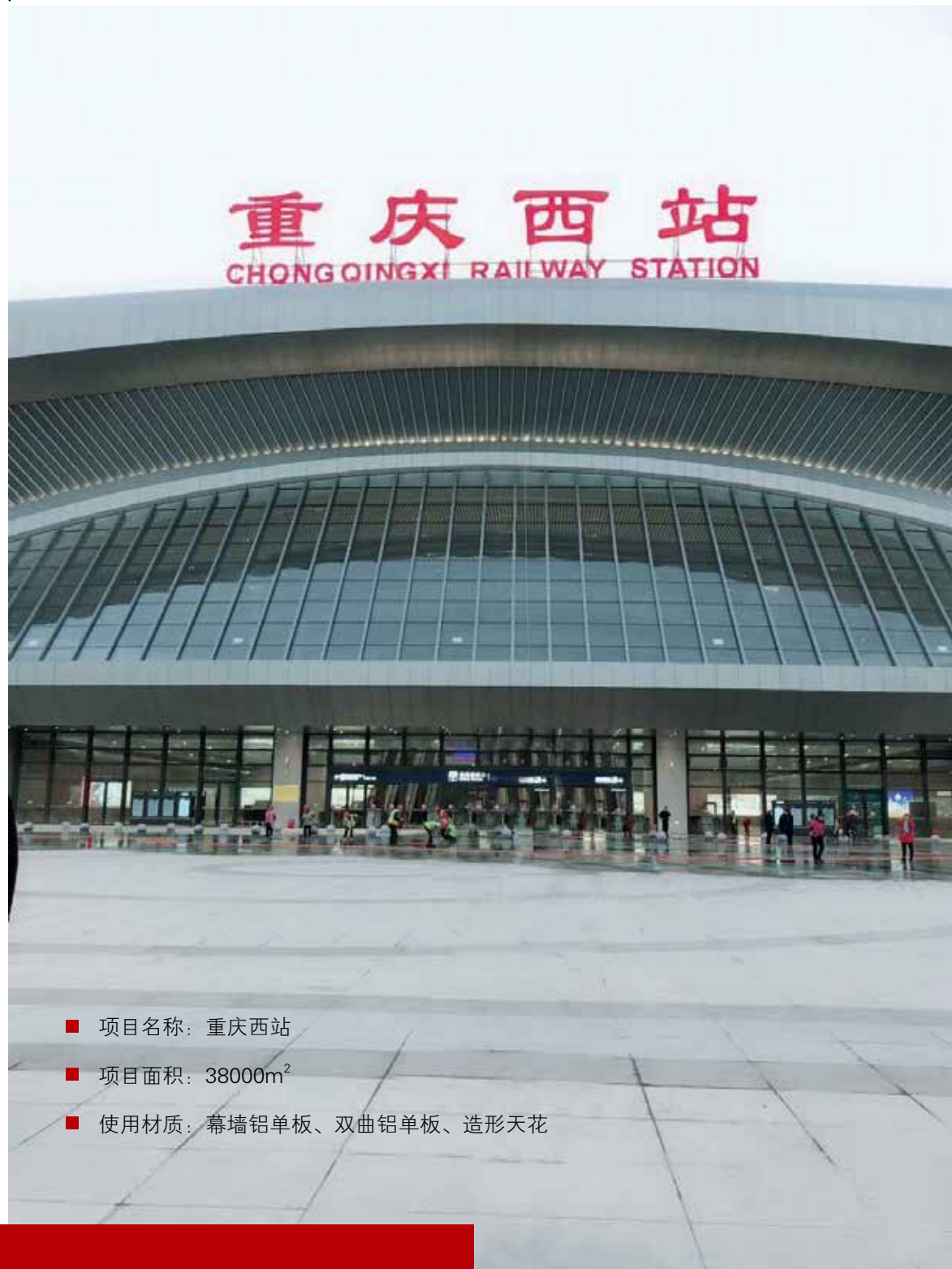


昕泰以品质彰显气势，建筑恢弘磅礴。就是喜欢这种站在几千公尺融入蓝天的无与伦比的享受，心和云同在一个高度，超凡脱俗，爱的就是这种感觉。

Xintai reflects an imposing manner with quality, making a building look boundless. We like this unparalleled enjoyment of standing at a height of several kilometers and incorporating the blue sky, making the heart and the cloud at the same height, which is extraordinary and refined, so love is this kind of feeling.

THE SAMPLES PROJECT

Fashion building material best quality xintai



- 项目名称：重庆西站
- 项目面积：38000m²
- 使用材质：幕墙铝单板、双曲铝单板、造形天花

THE SAMPLES PROJECT

Fashion building material best quality xintai



- 项目名称：贵阳北站
- 项目面积：63000m²
- 使用材质：幕墙铝单板、双曲铝单板





项目名称：中德工业服务中心 ■

项目面积：50000m² ■

使用材质：幕墙铝单板、双曲镂空板 ■

工程实例 THE SAMPLES PROJECT

Fashion building material best quality xintai



- 项目名称：崇左体育中心
- 项目面积：51000m²
- 使用材质：幕墙铝单板、造型天花

高雅中表现前卫时尚，既有典雅气质又有鲜明的时代特征，不可思议地将两种对立的感觉完美统一，将贵族的品味融于生活，展示着一种动人心魄的震撼。

In elegance, it displays avant garde and fashion, has both elegant makings and distinct characteristics of the time, unifies two opposing feelings in an inconceivable and perfect way, fuses noble's taste into life, and is showing a kind of soul-stirring shock.

工程实例 THE SAMPLES PROJECT

Fashion building material best quality xintai



- 项目名称：太子湾邮轮中心
- 项目面积：23000m²
- 使用材质：双曲镂空铝单板、造形铝天花

THE SAMPLES PROJECT

Fashion building material best quality xintai

- 项目名称：南宁万达茂广场
- 项目面积：36000m²
- 使用材质：幕墙铝单板、造型铝天花



THE SAMPLES PROJECT

Fashion building material best quality xintai



古典的荣光与时代的激情总是交相辉映。昕泰，从不墨守成规，每一种空间风格，
是对传统致敬，更是对人性全新的理解和张扬。

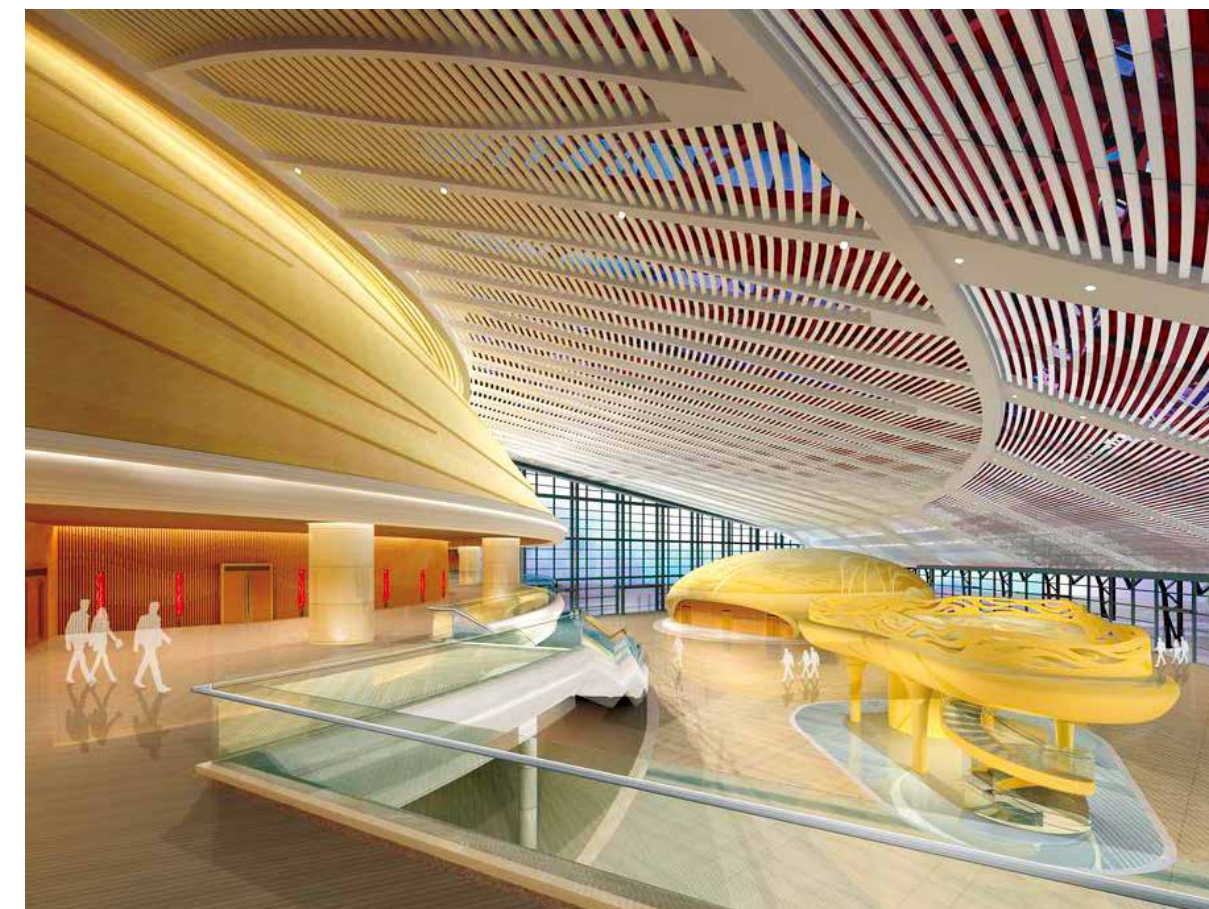
Classical honor and the passion of the times always enhance each other's beauty. Xintai never
sticks to the established practice, and every space style is a salute to the tradition and even the
brand-new understanding and publicity to the human nature.



- 项目名称：株洲大剧院
- 项目面积：48000m²
- 使用材质：幕墙铝单板、造型天花

THE SAMPLES PROJECT

Fashion building material best quality xintai





THE SAMPLES PROJECT

Fashion building material best quality xintai

高素质品味体现在建筑物内、外的每一处。外立面采用幕墙和混凝土实墙的简洁对比，没有过多的装饰，使建筑物更富个性。

The high-quality taste is reflected in every place inside and outside a building. Its external facade uses the succinct contrast between curtain wall and solid concrete wall, without too much decoration, making the building have more individuality.

- 项目名称：台州火车站
- 项目面积：13000m²
- 使用材质：幕墙铝单板、造形天花

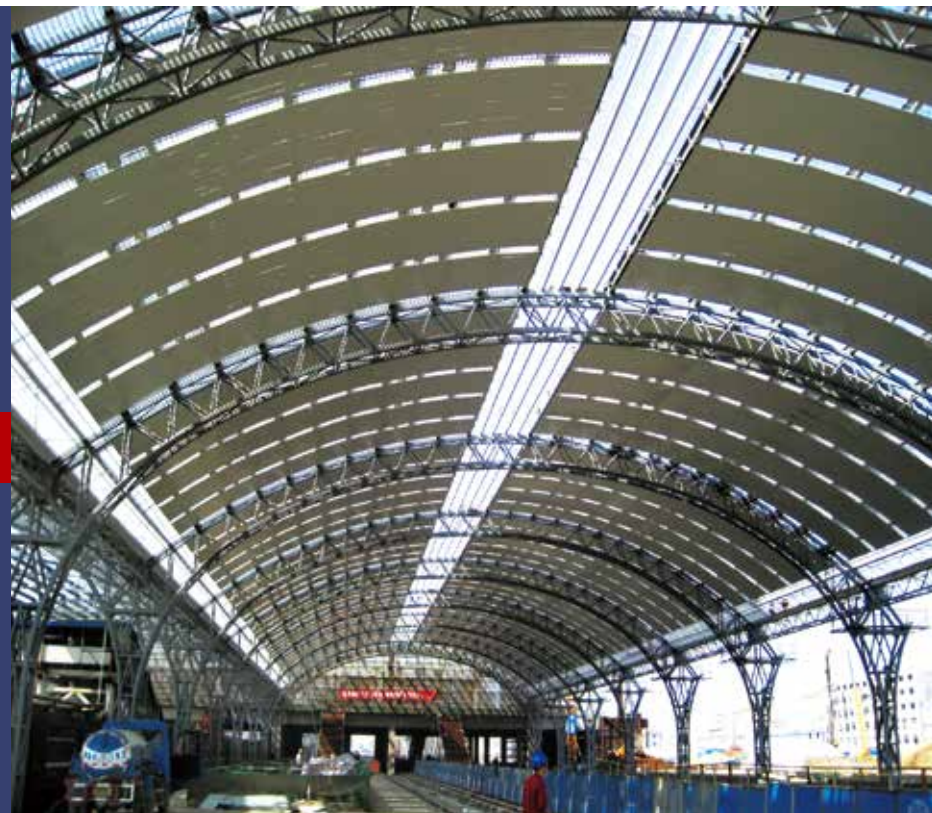




- 项目名称：武汉汉口火车站
- 项目面积：60000m²
- 使用材质：幕墙铝单板、造形天花

THE SAMPLES PROJECT

Fashion building material best quality xintai



- 项目名称：井冈山火车站
- 项目面积：12000m²
- 使用材质：幕墙铝单板、造形天花





■ 项目名称：昆明地铁 ■ 项目面积：62000m² ■ 使用材质：幕墙铝单板、造型铝天花

工程实例 THE SAMPLES PROJECT

Fashion building material best quality xintai

幽雅的豪门情调，与磅礴大气的空间格局，更彰显着这个都市荟萃多种文化精神，燃点无限生命活力的耀眼风采，令整个世界为之惊叹。

A rich and powerful family's sentiment which is quiet and tastefully laid out, with the boundless space pattern, reflects this city's assembling many kinds of cultural spirit even more, and ignites the dazzling elegance of limitless life vigor, making the world entirely exclaim for it.



■ 项目名称：广州快速公交系统站
■ 项目面积：30000m²
■ 使用材质：幕墙铝单板、造形天花

THE SAMPLES PROJECT

Fashion building material best quality xintai



- 项目名称：广珠轻轨东涌站
- 项目面积：9000m²
- 使用材质：幕墙铝单板、造型铝天花

工程实例 THE SAMPLES PROJECT

Fashion building material best quality xintai

高素质品味体现在建筑物内、外的每一处。外立面采用幕墙和混凝土实墙的简洁对比，没有过多的装饰，使建筑物更富个性。

The high-quality taste is reflected in every place inside and outside a building. Its external facade uses the succinct contrast between curtain wall and solid concrete wall, without too much decoration, making the building have more individuality.



- 项目名称：广州奥体中心地铁站
- 项目面积：12000m²
- 使用材质：幕墙铝单板、造型铝天花



■ 项目名称：南京奥体中心体育馆 ■ 项目面积：60000m² ■ 使用材质：幕墙铝单板、造型铝天花

工程实例 THE SAMPLES PROJECT

Fashion building material best quality xintai





■ 项目名称：广州垣尾地铁站 ■ 项目面积：10000m² ■ 使用材质：幕墙铝单板、造型铝天花

工程实例 THE SAMPLES PROJECT

Fashion building material best quality xintai



- 项目名称：广州
- 项目面积：12000m²
- 使用材质：幕墙铝单板、造形天花





- 项目名称：南海万达广场
- 项目面积：38000m²
- 使用材质：幕墙铝单板、双曲铝单板

THE SAMPLES PROJECT

Fashion building material best quality xintai



- 项目名称：珠海海琴湾大酒店
- 项目面积：32000m²
- 使用材质：幕墙铝单板、造形天花、铝栏杆





- 项目名称：蜀南大道建筑群
- 项目面积：46000m²
- 使用材质：幕墙铝单板、造型天花





工程实例

THE SAMPLES PROJECT

Fashion building material best quality xintai

- 项目名称：广东中烟工业有限责任公司梅州卷烟厂
- 项目面积：28000m²
- 使用材质：幕墙铝单板、双曲铝单板

古典的荣光与时代的激情总是交相辉映。听泰，从不墨守成规，每一种空间风格，是对传统致敬，更是对人性全新的理解和张扬。

Classical honor and the passion of the times always enhance each other's beauty. Xintai never sticks to the established practice, and every space style is a salute to the tradition and even the brand-new understanding and publicity to the human nature.

- 项目名称：西昌烟厂
- 项目面积：18000m²
- 使用材质：幕墙铝单板、造型铝天花



- 项目名称：华南水产市场
- 项目面积：28500m²
- 使用材质：幕墙铝单板、双曲铝单板



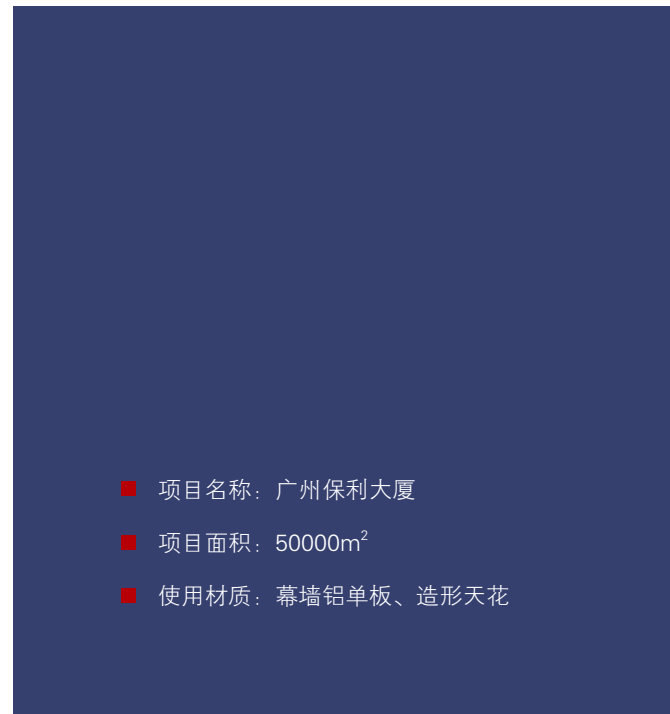
- 项目名称：四川六脉科技金融创新产业园
- 项目面积：32000m²
- 使用材质：幕墙铝单板、造型铝天花

高素质品味体现在建筑物内、外的每一处。外立面采用幕墙和混凝土实墙的简洁对比，没有过多的装饰，使建筑物更富个性。

The high-quality taste is reflected in every place inside and outside a building. Its external facade uses the succinct contrast between curtain wall and solid concrete wall, without too much decoration, making the building have more individuality.



■ 项目名称：昆明阳光嘉年华商业中心 ■ 项目面积：4000m² ■ 使用材质：幕墙铝单板、造型铝天花



昕泰用现代的色彩包裹传统的灵魂，简化的线条、蜿蜒的图腾，借着这样一种风格，让长期停留在巴黎、纽约、米兰的眼光，重新聚焦中国美学。

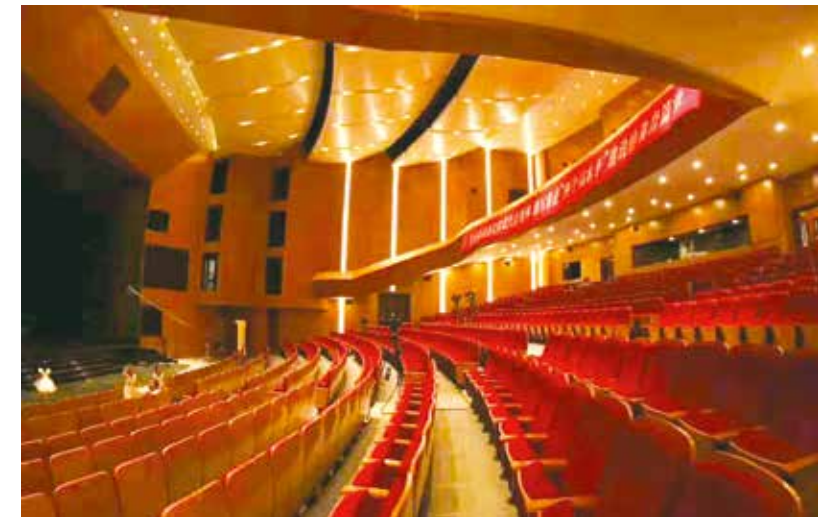
Xintai uses the colors of the modern times to wrap the traditional soul. Its simple lines and sinuous totems borrow such a style to let eyes staying in Paris, New York and Milan for a long time focus on China's aesthetics again.



■ 项目名称：桐乡会展中心 ■ 项目面积：14000m² ■ 使用材质：幕墙铝单板、造型铝天花

昕泰在每件作品中留下不可复制的印痕。充满故事的神秘岁月，更将其淬炼成绝无仅有的个性珍品。此时此刻，将日常生活演绎成一场场惹人惊羡的传奇。

Xintai leaves an impression which is not reproducible, in each of its works. The mysterious years full of stories even make it become a peerless distinctive treasure. At this moment, deduce the daily life into wondrous and envying legends.



■ 项目名称：黄岩服务中心
■ 项目面积：18500m²
■ 使用材质：镂空铝单板、双曲铝单板、造型天花

THE SAMPLES PROJECT

Fashion building material best quality xintai



工程实例

THE SAMPLES PROJECT

Fashion building material best quality xintai

■ 项目名称：宜春高铁站 ■ 项目面积：40000m² ■ 使用材质：幕墙铝单板、造型铝天花



工程实例

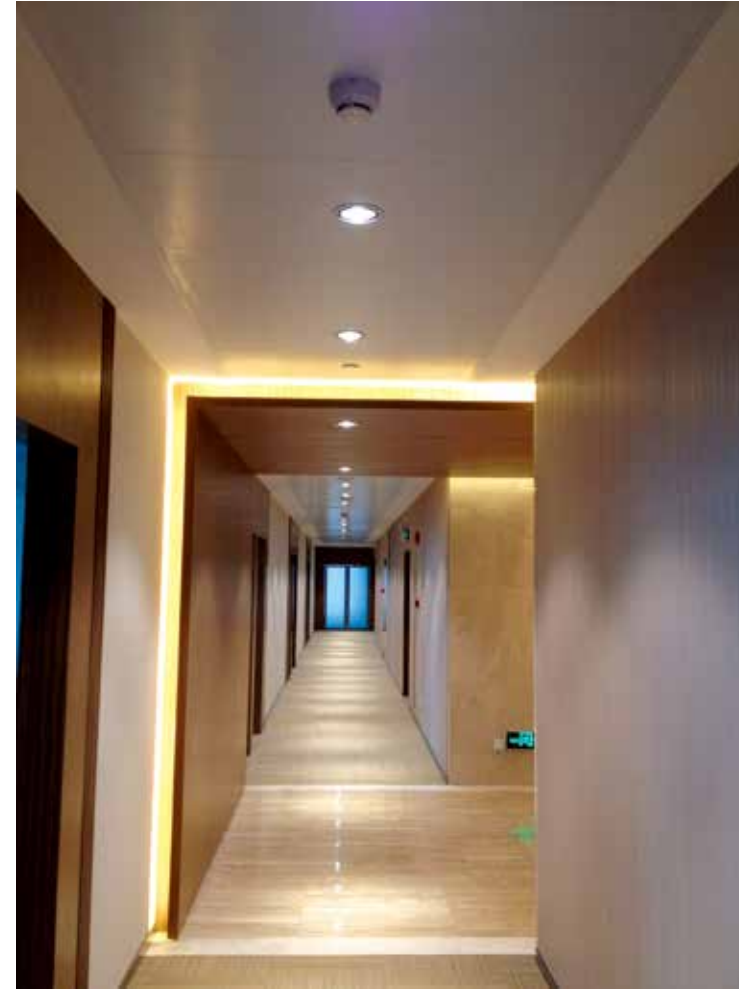
THE SAMPLES PROJECT

Fashion building material best quality xintai

- 项目名称：华南国际金融中心
- 项目面积：40000m²
- 使用材质：镂空铝单板、双曲铝单板、造型天花

昕泰在每件作品中留下不可复制的印痕。充满故事的神秘岁月，更将其淬炼成绝无仅有的个性珍品。此时此刻，将日常生活演绎成一场场惹人惊羡的传奇。

Xintai leaves an impression which is not reproducible, in each of its works. The mysterious years full of stories even make it become a peerless distinctive treasure. At this moment, deduce the daily life into wondrous and envying legends.





听泰在每件作品中留下不可复制的印痕。充满故事的神秘岁月，更将其淬炼成绝无仅有的个性珍品。此时此刻，将日常生活演绎成一场场惹人惊羡的传奇。

Xintai leaves an impression which is not reproducible, in each of its works. The mysterious years full of stories even make it become a peerless distinctive treasure. At this moment, deduce the daily life into wondrous and envying legends.



THE SAMPLES PROJECT

Fashion building material best quality xintai



THE SAMPLES PROJECT

Fashion building material best quality xintai

听泰在每件作品中留下不可复制的印痕。充满故事的神秘岁月，更将其淬炼成绝无仅有的个性珍品。此时此刻，将日常生活演绎成一场场惹人惊羡的传奇。

Xintai leaves an impression which is not reproducible, in each of its works. The mysterious years full of stories even make it become a peerless distinctive treasure. At this moment, deduce the daily life into wondrous and envying legends.





部分工程目录

Fashion building material best quality xintai

ENGINEER SAMPLES PART LIST

序号	工程名称	面积	序号	工程名称	面积	序号	工程名称	面积
华中地区			华东地区			69	厦门嘉琳广场	27412
1	湖北武汉人民医院	6745	35	浙江台州火车站	9118	70	厦门中华城	4305
2	湖北武汉协和医院	48000	36	浙江镇江西站	12416	71	厦门民生银行	2341
3	湖北武汉新华医院	5243	37	浙江长兴医院	7856	72	厦门世界山庄	3679
4	湖北仙桃第一人民医院	15493	38	浙江嘉兴第一人民医院	2663	73	厦门紫金广场工程	5784
5	湖北十堰市太和医院	2314	39	奉化火车站	8121	74	厦门保洋实业	27810
6	湖北仙桃站	8777	40	三门火车站	6033	75	福州海南金湾酒店	4567
7	湖北银鹭二期成品仓	11000	41	杭州地铁	2673	76	福州红星美凯龙	2004
8	湖北工程	1846	42	杭州邱山隧道	5495	77	福州漳平汽车站	1021
9	湖北武汉铁道	345	43	杭州长兴中医院	3214	78	福建泉州新医院	4012
10	湖北汉口火车站	31282	44	杭州桐乡世贸中心	6745	79	福建福鼎火车站	8000
11	湖南浏阳妇幼	2450	45	杭州邮电大厦	1345	80	福建东二环泰禾广场(亚鹰)	20254
12	湖南沅江人民医院	28933	46	杭州市民中心	10231	81	上海石首市人民医院门诊	5324
13	湖南郴州第一人民医院	3375	47	杭州广粤芸工程	3425	82	山东枣庄医院	6350
14	湖南益阳中心医院	12628	48	杭州中南大楼观光电梯厅	4567	83	山东枣庄中医院	22000
15	湖南郴州移动办公楼	5435	49	南京小天鹅幼儿园	3042	84	山东德州大剧院	5620
16	湖南长沙自来水厂	3602	50	宁波书城	2450	85	大连中信	2346
17	湖南衡阳地税局	4012	51	宁波金华世贸大厦	4115	86	大连居然之家	7645
18	湖南广电	3945	52	宁波日创	2143	87	青岛华通	1054
19	湖南金桥国际商贸城	4576	53	宁波天一广场	3567	88	枣庄薛诚职业学校	3756
20	湖南龙女温泉度假区	6421	54	无锡火车站	5978	89	山东新城大酒店	2756
21	湖南芙蓉盛世	4562	55	合肥滁州世纪城	3400	华南地区		
22	湖南宁乡售楼部	3456	56	合肥蚌埠公安局	2456	90	深圳泰然大厦	37012
23	湖南永州烟草配送中心	10234	57	合肥蚌埠司法鉴定中心	1897	91	深圳南山珑御府工程	20105
24	长沙梅溪湖国际新城	6402	58	合肥蚌埠南站	2177	92	深圳东方花园	2345
25	株洲美的万丽酒店	1785	59	江西九江火车站	6211	93	深圳中海物流园	4356
26	太仓万达	2345	60	江西鹰潭铁路雨棚	1130	94	深圳宝安非常公寓	2312
27	河南郑州火车站	38431	61	江西水上搜救中心	3456	95	深圳宝运达酒店	3781
28	河南郑州汇景中油	3421	62	江西鹰潭指挥中心	2417	96	深圳海岸城广场	20131
29	河南郑州华南城	6723	63	江西南昌林科院	1852	97	深圳宝运达物流中心	42848
30	河南洛阳南站屋面	25601	64	江西吉安九江银行	1345	98	深圳地铁	8548
31	河南漯河高铁站	1500	65	江西南康中心市场	10123	99	深圳宝安职业学校体育馆	4011
32	河南许昌高铁站	37100	66	江西省进贤工地售楼部	5642	100	深圳颐安天著花园二期	6719
33	河南安阳华强中心	3011	67	江西莲花县体育馆	14520	101	深圳市吉承翰学校高中部	5312
34	河南居然之家洛阳店	5678	68	江西德兴东方大酒店	1543	102	深圳海王银河科技大厦	3456

序号	工程名称	面积	序号	工程名称	面积	序号	工程名称	面积
103	东莞东城万达广场	14561	146	海南金湾酒店	10247	189	成都华为软件工厂幕墙	5043
104	东莞现代国际广场	54623	147	海南清水湾别墅	17846	190	成都首座二期酒店	40121
105	东莞塘厦图书馆	10234	148	三亚海口居然之家	7856	191	成都华西蜀都中心	44281
106	东莞星耀广场	8756	149	香港将军澳铁路站	1322	192	绵阳车驾管理中心	5602
107	珠海横琴湾（酒店 & 水上乐园）	35023	150	香港工程	6478	193	绵阳市电视台内装	3812
108	珠海优特电力	4958	西南地区			194	绵阳广播电视台外装	4312
109	珠海华发新城	4567	151	昆明南站客运站	2994	195	绵阳市石桥铺项目	1023
110	珠海（澳门大学）	15234	152	昆明地铁 1 号线	10431	196	西昌烟厂	8203
111	中山石岐火车站	1939	153	昆明阳光测控基地	2362	197	恒泽动力	1006
112	广珠城际轨道（古镇、江海）	20582	154	昆明嘉年华广场	3451	198	华宇·蓉国府	997
113	广州地铁	20335	155	昆明普洱交警指挥中心	1789	199	南充工程	1504
114	广州轻纺城	47560	156	昆明龟龙湖	12345	200	香障俊园	3212
115	广州 BRT 公交线	30121	157	昆明保山会展	38496	201	铁狮门	1975
116	广州火车站	3421	158	昆明曲靖移动办公大楼	2345	202	北川博物馆	5045
117	广州广东节目制作中心	2784	159	昆明弥勒财富酒店二期	1879	203	重宾·保利国际广场	9012
118	广州萝岗疾病控制中心	2046	160	云南西双版纳机场	30331	204	重庆银行	2983
119	广州沙企综合楼	1746	161	云南红星国际工程	1034	205	巴南支行	2012
120	广州珠江新城	3456	162	云南心景假日	3013	206	广安葫芦岛大酒店工程	8123
121	广州芳村满芳庭中学	1023	163	云南水电站	2453	207	乐山法院工程	504
122	广州增城中学	975	164	云南普洱英爵油业	2456	208	温州环岛	3546
123	广州珠江花园	15634	165	云南普洱锦辉地产	2347	209	攀枝花奔驰 4S 店	1984
124	中海银海湾三期	25000	166	贵阳花溪农村信用社	2345	210	奥克伍德公区	2011
125	天安数码城	10234	167	贵阳中天世纪新城工程	17846	西北地区		
126	佛山市新城商务中心	36780	168	贵阳花果园商业中心	24561	211	西藏拉萨人民银行	1321
127	佛山东方誉酒店	1956	169	贵阳清镇石关乳产品加工基地综合办公楼	3456	212	兰州工程	3546
128	佛山富凯合盈建筑工程	4578	170	贵阳银湾广场	1311	213	呼市新科	2013
129	广佛新世界（CF-09 大货南区）	27560	171	贵阳计生委	1045	214	青海慈润纺织大厦	7564
130	南海万达广场	13240	172	贵州华通福特 4S 店	1895	215	青海索菲来大酒店	8563
131	惠州时尚购物广场	9756	173	贵州遵义县农村信用社	2231	216	陕西海升果业总部	2356
132	广东阳江公交车站	2150	174	贵州遵义妇幼保健院	3756	217	陕西省榆林档案馆	4567
133	广东阳江丝绸之路博物馆	2013	175	贵州六盘水火车站扩建工程	5786	218	陕西榆林天花	4612
134	广东阳江市中心医院	2745	176	贵州织金半岛温泉村	4321	219	汉中高铁车站	17800
135	广东韶关丽晶大酒店	5000	177	四川电力	2045	220	西安农林研究院	1035
136	汕头星汇国际南城	8020	188	四川省人民医院	1023	221	西安大明宫	5024
137	汕头天信大酒店	15011	179	四川省肿瘤医院	3456	222	西安机电学院	2413
138	汕头康美医院	30122	180	成都非物质博物馆	4500	223	西安未来城	3411
139	广西梧州龙城酒店	5644	181	成都长城酒店	1013	224	西安中烟工程	8932
140	广西泰亨	1546	182	成都体育场包柱	2045	225	西安新世界百货	2632
141	广西柳州螺丝楼	2415	183	成都养老院	1002	226	西安沣东城市广场	10756
142	广西南宁人民法院	3478	184	成都广电中心	1524	227	宝鸡体育馆	10389
143	广西文昌路	2345	185	成都飞大内售楼处	1000	228	中卫秀水岛	2456
144	广西南宁火车站	20134	186	成都华高置业中环岛	3542	229	银川万达	6700
145	雅居乐	25022	187	成都神仙树工程	20123	230	银川税校报告厅	2043
146	海南金湾酒店	10247	188	成都机场 VIP 厅	2513	231	银川国家电网	3456